

Madison, Wisconsin

INDEX OF SHEETS

SHEET NO.	TITLE
1	
D1-D4	DETAILS
EC1	EROSION CONTROL
P1-P6	PLAN & PROFILE
U1-U6	SEWER PLAN & PROFILES
U7-U8	SEWER SCHEDULES

# CITY OF MADISON

## CITY ENGINEERING DIVISION

### DEPARTMENT OF PUBLIC WORKS

# PLAN OF PROPOSED IMPROVEMENT

## NORTH BROOKS STREET, FAHRENBROOK COURT AND COLLEGE COURT RESURFACING ASSESSMENT DISTRICT-2021

CITY PROJECT NO. 13180  
CONTRACT NO. 8576

CONVENTIONAL SIGNS	
FIELD VERIFY ALL UTILITY LOCATIONS	
GAS	— G —
STORM SEWER	— ST —
SANITARY SEWER	— SAN —
WATER	— W —
BURIED ELECTRIC	— E —
OVERHEAD ELECTRIC	— OH —
POWER POLE	
ADA COMPLIANT RAMP W/ DETECTABLE WARNING FIELD	
COMBUSTIBLE FLUIDS	



PROJECT LOCATION

PUBLIC IMPROVEMENT PROJECT APPROVED

APPROVED DATE: MARCH 16, 2021

BY THE COMMON COUNCIL OF MADISON, WISCONSIN

PUBLIC IMPROVEMENT DESIGN APPROVED BY:

*Greg Fries* Apr 2, 2021

City Engineer Date

STREET DESIGNED BY:



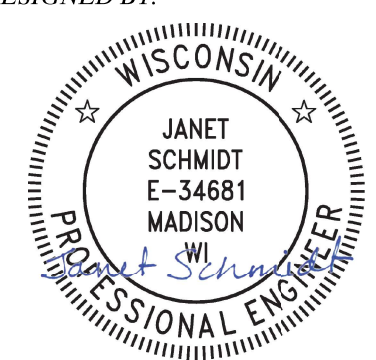
Apr 2, 2021

SANITARY SEWER DESIGNED BY:



Apr 2, 2021

STORM SEWER DESIGNED BY:



Apr 2, 2021

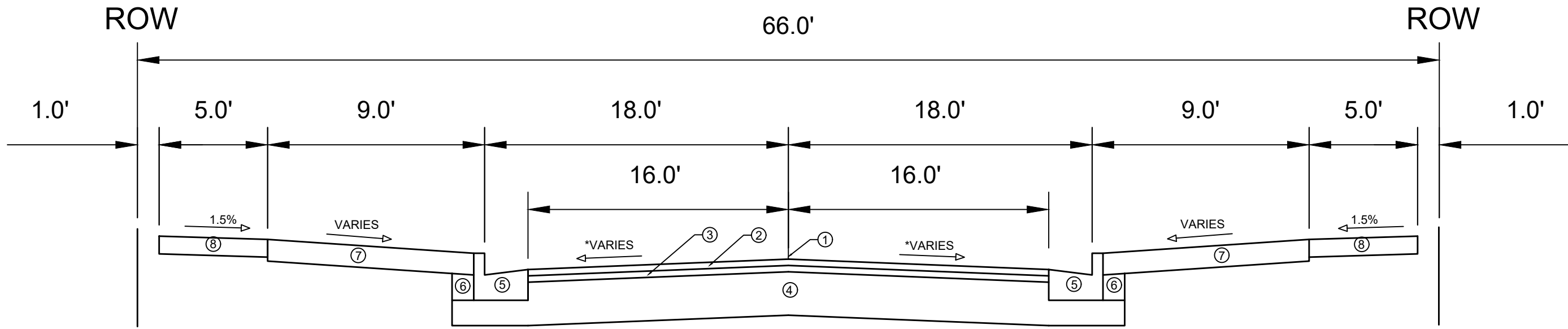
PLOT SCALE: 1" = 1'

PLOT NAME: REV. DATE: 4/1/2021 8:57 AM

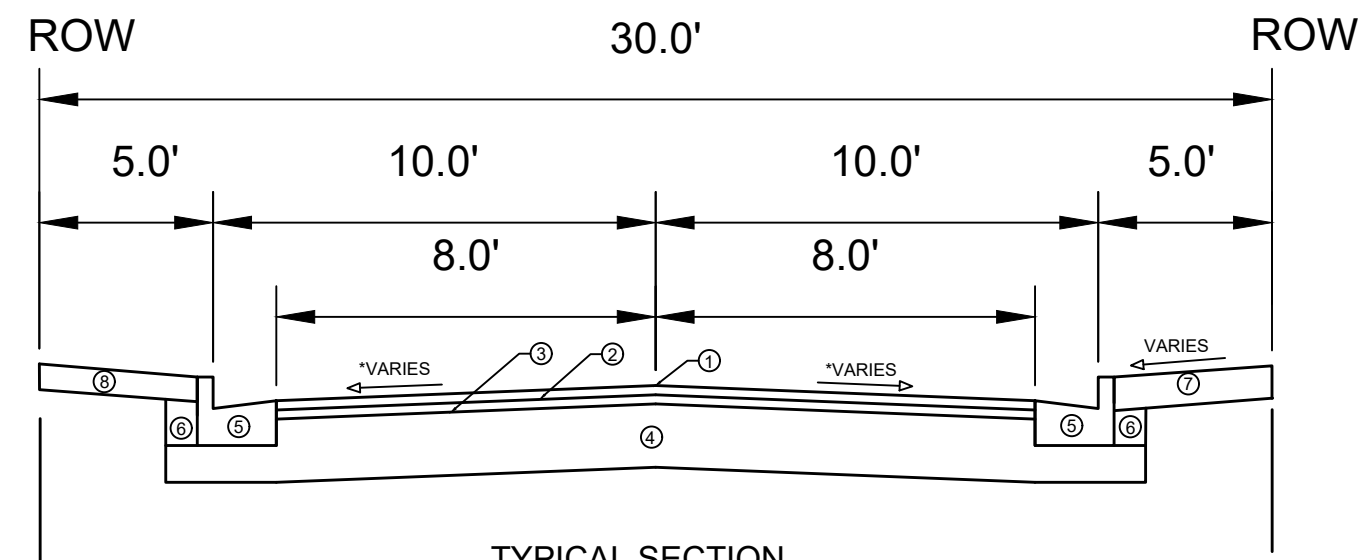
ORIGINATOR: CITY OF MADISON

NOTES:  
ALL GUTTERS SHALL DRAIN WITH A MINIMUM GRADE OF 0.50% TOWARD STORM SEWER INLETS.

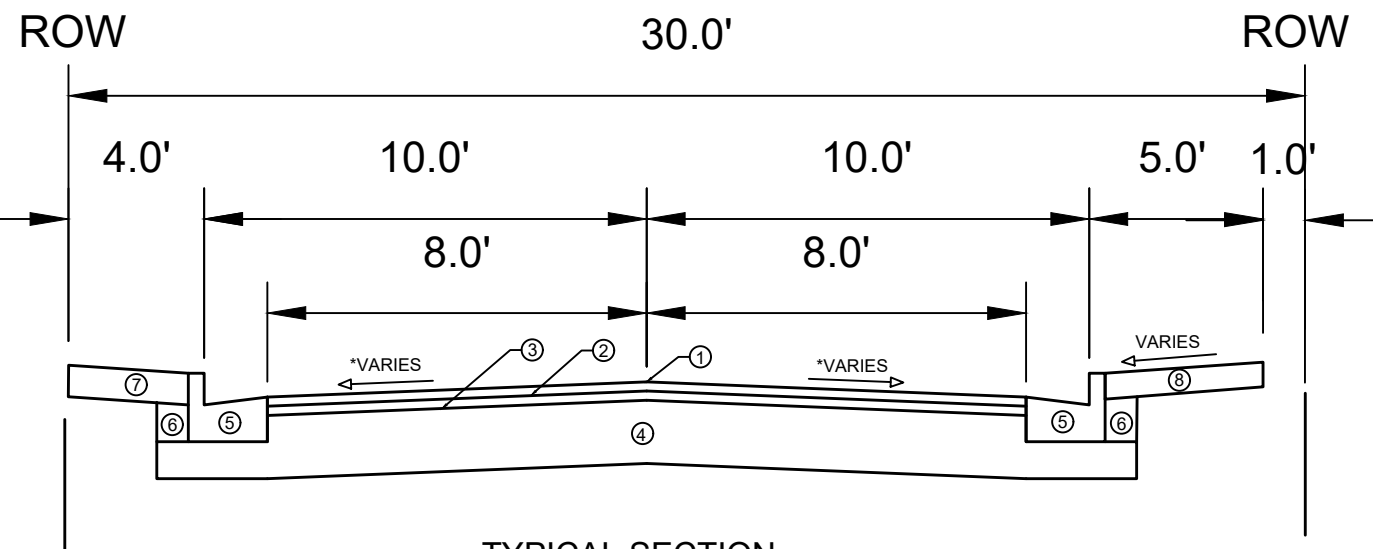
EARTH WORK SUMMARY:  
ESTIMATED UNDISTRIBUTED UNDERCUT = 405.0 C.Y.  
TOTAL UNCLASSIFIED EXCAVATION CUT = 405.0 C.Y.



TYPICAL SECTION  
NORTH BROOKS STREET



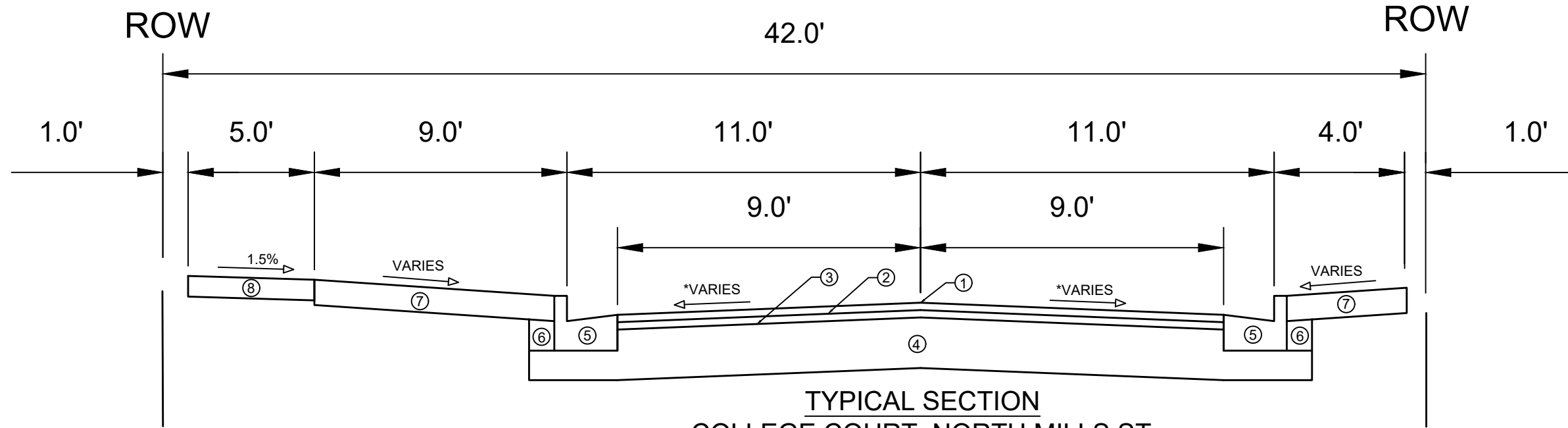
TYPICAL SECTION  
FAHRENBROOK COURT: NORTH BROOKS  
STREET TO NORTH PARK STREET



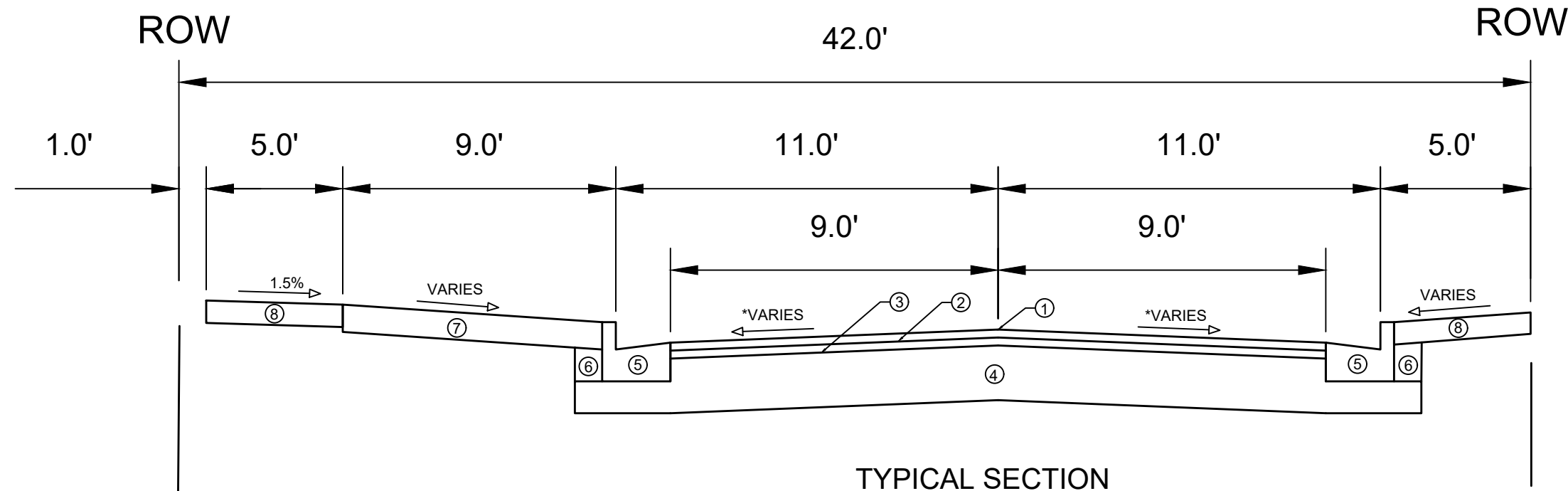
TYPICAL SECTION  
FAHRENBROOK COURT: NORTH MILLS  
STREET TO NORTH BROOKS STREET

- ① POINT REFERRED TO ON PROFILE
- ② 1.75" HMA PAVEMENT- TYPE 4 LT 58-28 S
- ③ 1.75" HMA PAVEMENT- TYPE 4 LT 58-28 S
- ④ EXISTING BASE COURSE
- ⑤ CONCRETE CURB AND GUTTER, REMOVE AND REPLACE AS SHOWN ON THE P-SHEETS OR AS DIRECTED BY THE ENGINEER
- ⑥ FILL INCIDENTAL TO CURB AND GUTTER INSTALLATION
- ⑦ 6" TOPSOIL, SEED, & MAT AS NEEDED
- ⑧ 5" CONCRETE SIDEWALK, REMOVE AND REPLACE AS SHOWN ON THE P-SHEETS OR AS DIRECTED BY THE ENGINEER

13180	13180	13180	13180	13180	13180
13180-TYPICAL SECTIONS					
N BROOKS ST, FAHRENBROOK CT & COLLEGE CT RES ASMNT DIST-2021 MADISON, WI					
M:\DESIGN\Projects\13180\CAD\Streets\13180-D Sheets.dwg					
CONTRACT NO: 8576					
Date: 4/17/2021 7:55 AM					
Scale: D-1					
13180					
D-1					



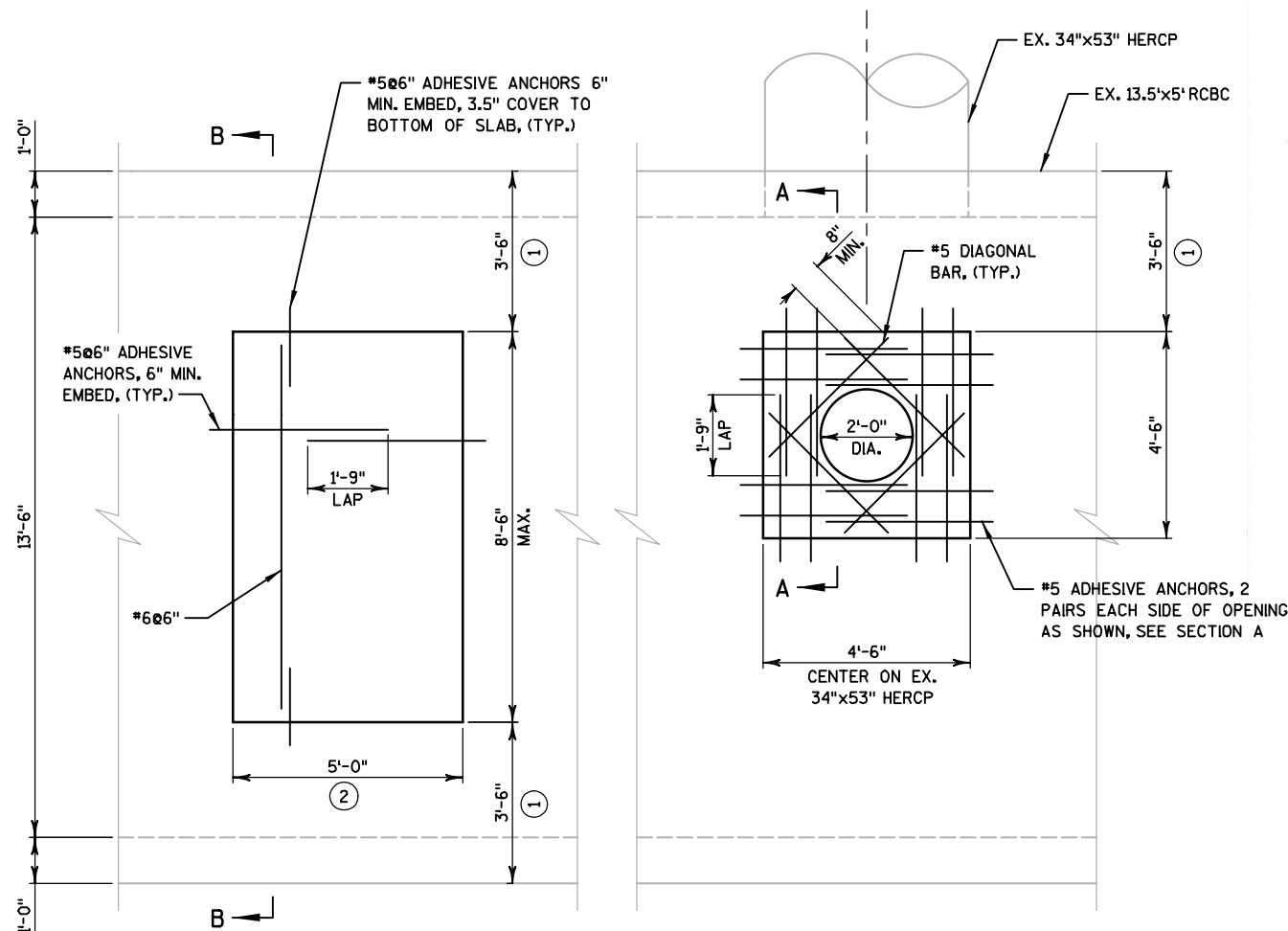
TYPICAL SECTION  
COLLEGE COURT: NORTH MILLS ST  
TO NORTH BROOKS STREET



TYPICAL SECTION  
COLLEGE COURT: NORTH BROOKS STREET  
TO NORTH PARK STREET

- ① POINT REFERRED TO ON PROFILE
- ② 1.75" HMA PAVEMENT- TYPE 4 LT 58-28 S
- ③ 1.75" HMA PAVEMENT- TYPE 4 LT 58-28 S
- ④ EXISTING BASE COURSE
- ⑤ CONCRETE CURB AND GUTTER, REMOVE AND REPLACE AS SHOWN ON THE P-SHEETS OR AS DIRECTED BY THE ENGINEER
- ⑥ FILL INCIDENTAL TO CURB AND GUTTER INSTALLATION
- ⑦ 6" TOPSOIL, SEED, & MAT AS NEEDED
- ⑧ 5" CONCRETE SIDEWALK, REMOVE AND REPLACE AS SHOWN ON THE P-SHEETS OR AS DIRECTED BY THE ENGINEER

13180	13180	13180	13180	13180	13180
13180-TYPICAL SECTIONS					
N BROOKS ST, FAHRENBERG CT & COLLEGE CT RES ASMNT DIST-2021 MADISON, WI					
M:\DESIGN\Projects\13180\CAD\Streets\13180-D Sheets.dwg					
Contract No: 8576			Scale: D-2		
					
13180					
D-2					



TOP SLAB AT RCBC ACCESS HOLE

TOP SLAB AT NEW CASTING

NOTE:  
RCBC ACCESS HOLE IS NOT REQUIRED. DETAIL IS PROVIDED FOR USE AT CONTRATOR'S OPTION. SIZE AND LOCATION OF ACCESS TO BE DETERMINED BY CONTRACTOR.

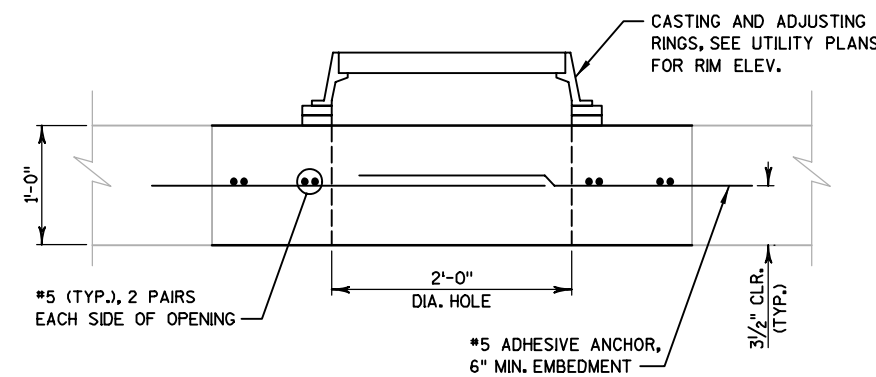


GENERAL NOTES

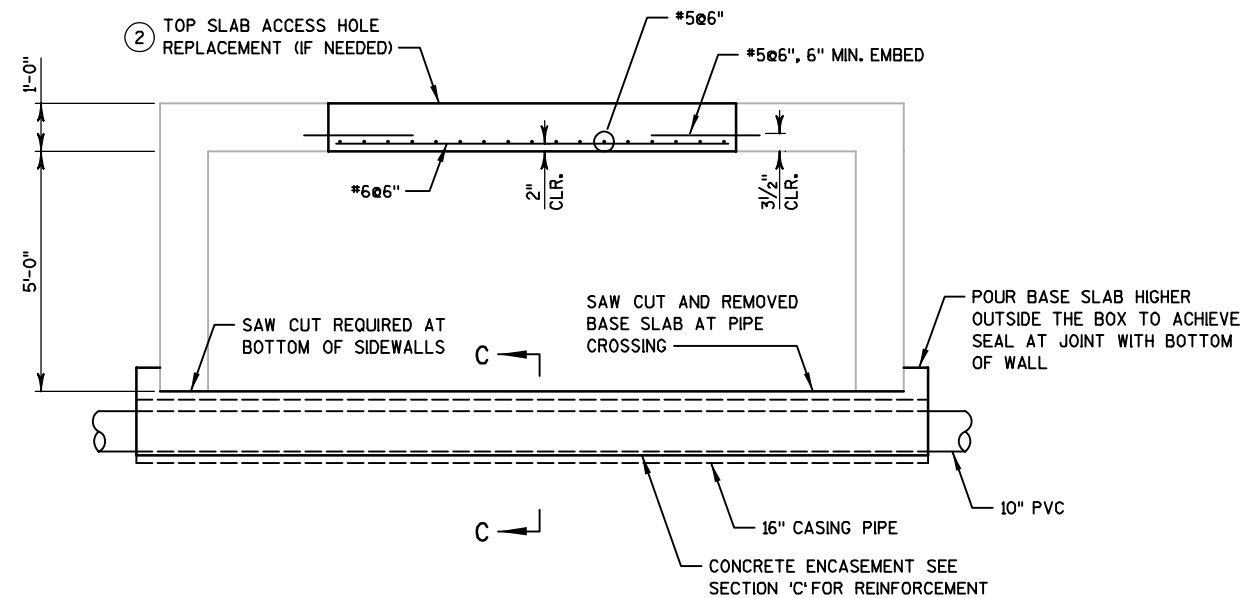
1. ALL WORK SHALL BE IN ACCORDANCE WITH THE CITY OF MADISON STANDARD SPECIFICATIONS FOR PUBLIC WORKS CONSTRUCTION AND THE APPLICABLE SPECIAL PROVISIONS.
2. REFER TO UTILITY PLANS FOR PIPE REQUIREMENTS AND ELEVATIONS.
3. CONCRETE FOR BOTTOM SLAB REPAIR SHALL NOT BE PLACED UNDER WATER. DE-WATER THE WORK AREA AS REQUIRED AND MAINTAIN DEWATERED CONDITION FOR AT LEAST 6 HOURS AFTER COMPLETION OF CONCRETE POUR.
4. LIMITS OF CONCRETE REMOVAL SHALL BE SAW CUT. DO NOT REMOVE CONCRETE BEYOND THE LIMITS SHOWN ON THIS SHEET WITHOUT PRIOR APPROVAL FROM ENGINEER.
5. CONCRETE FOR THE STRUCTURES SHOWN ON THIS SHEET SHALL HAVE A MINIMUM COMPRESSIVE STRENGTH OF 4,000 PSL.
6. STRUCTURE MODIFICATIONS SHOWN ON THIS SHEET HAVE BEEN DESIGNED BY STRAND ASSOCIATES, INC. DESIGN CONTACT IS BRETT OFTEDAHL, 608-251-4843.

KEY NOTES

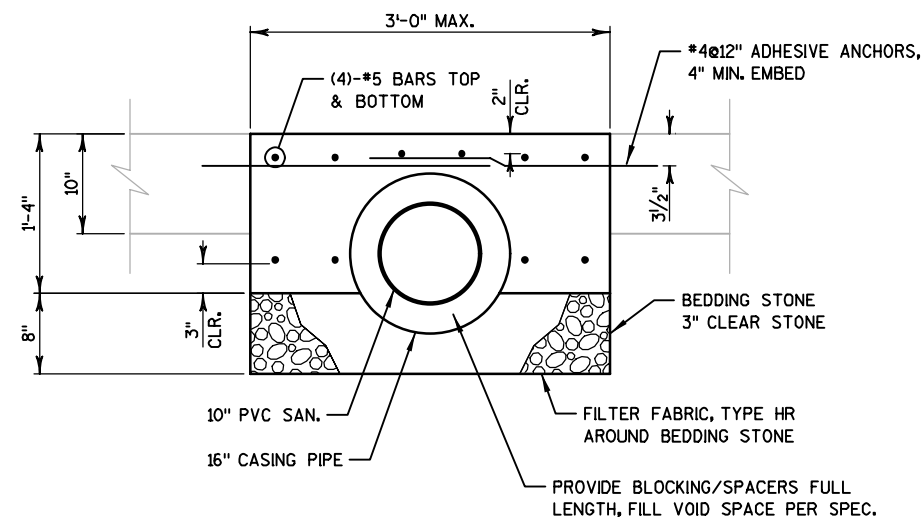
- ① THE OUTER 3'-6" OF THE TOP SLAB SHALL NOT BE REMOVED.
- ② ACCESS HOLE DIMENSIONS SHALL BE DETERMINED BY CONTRACTOR FOLLOWING THE CRITERIA PROVIDED ON THIS SHEET. CONTRACTOR SHALL SUBMIT REQUESTS FOR A DIFFERENT SIZE OF OPENING TO ENGINEER FOR REVIEW.



SECTION A



SECTION B



SECTION C

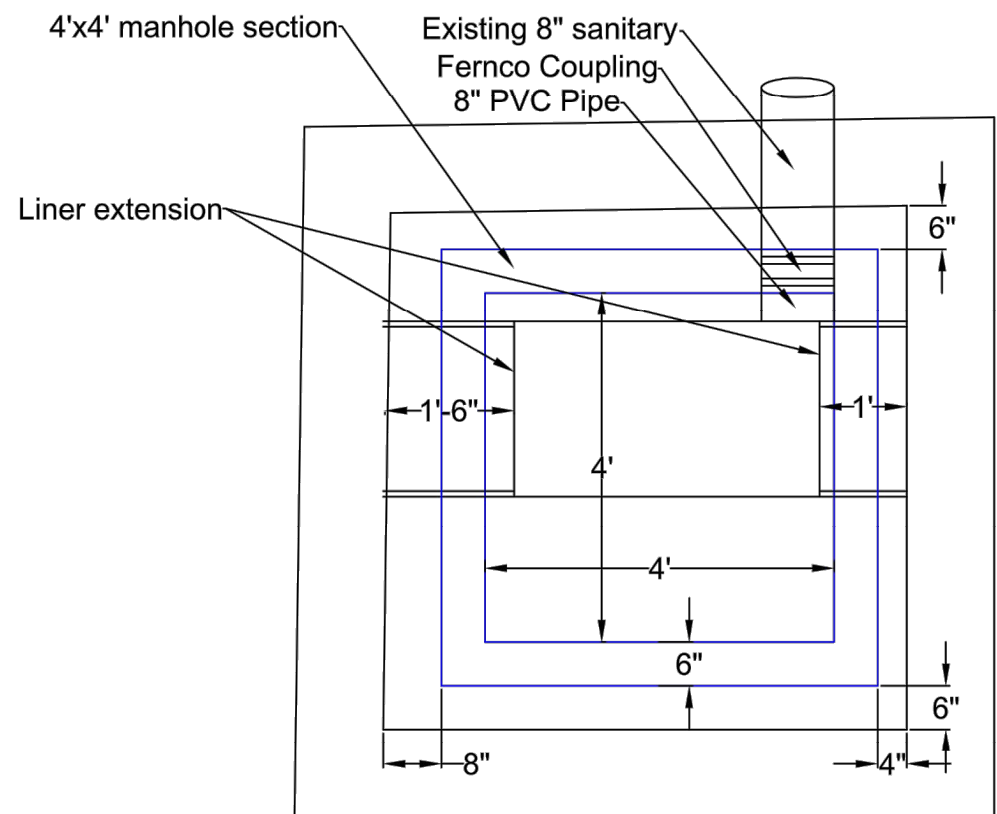
NO.	REVISIONS	DATE
1	ISSUED WITH ADDENDUM NO. 2	4/27/21

REINFORCED CONCRETE  
BOX CULVERT MODIFICATIONS  
N. BROOKS ST., FAHRENBERG CT. & COLLEGE CT.  
RES ASMT DIST-2021 - CONTRACT NO: 8576  
CITY OF MADISON  
DANE COUNTY

JOB NO.  
1020.127  
PROJECT MGR.  
BRETT O.

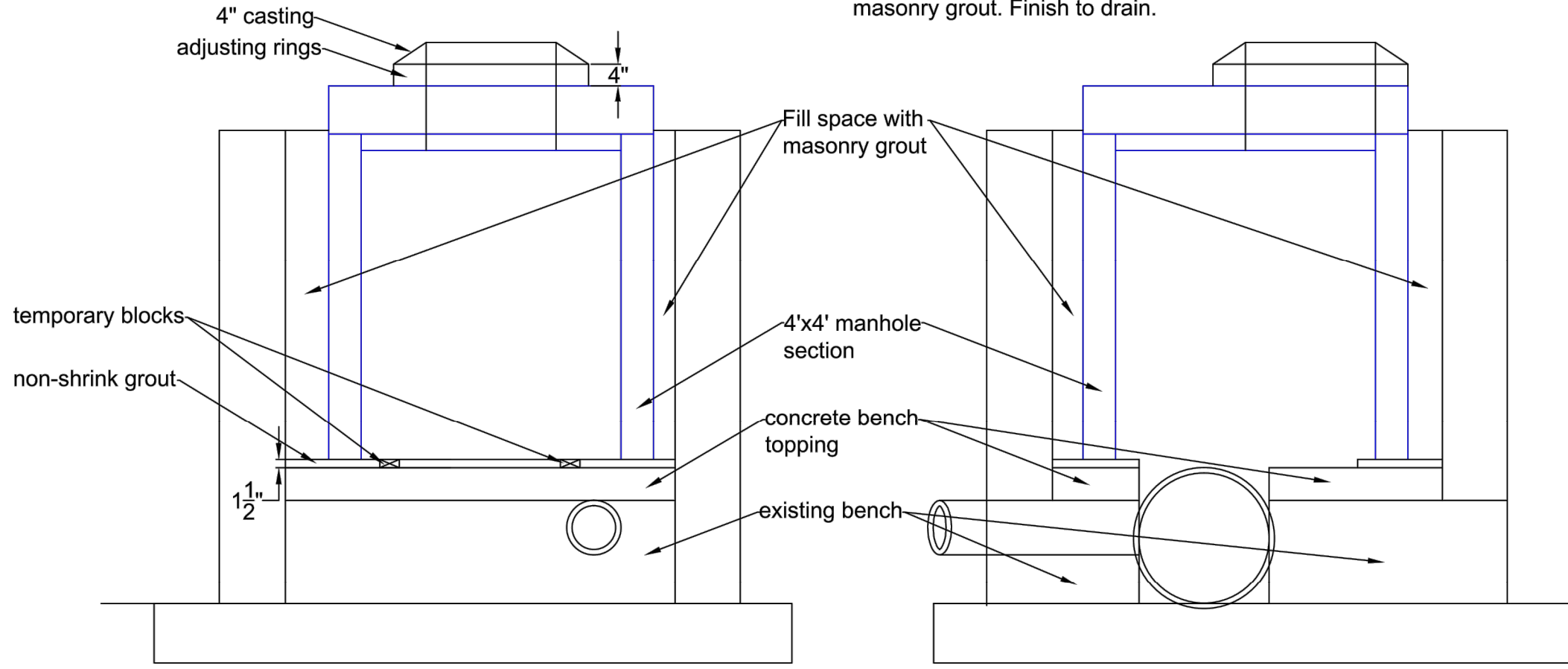


SHEET  
D-3



AS-BUILT PROVIDED  
BY MMSD FOR  
REFERENCE ONLY

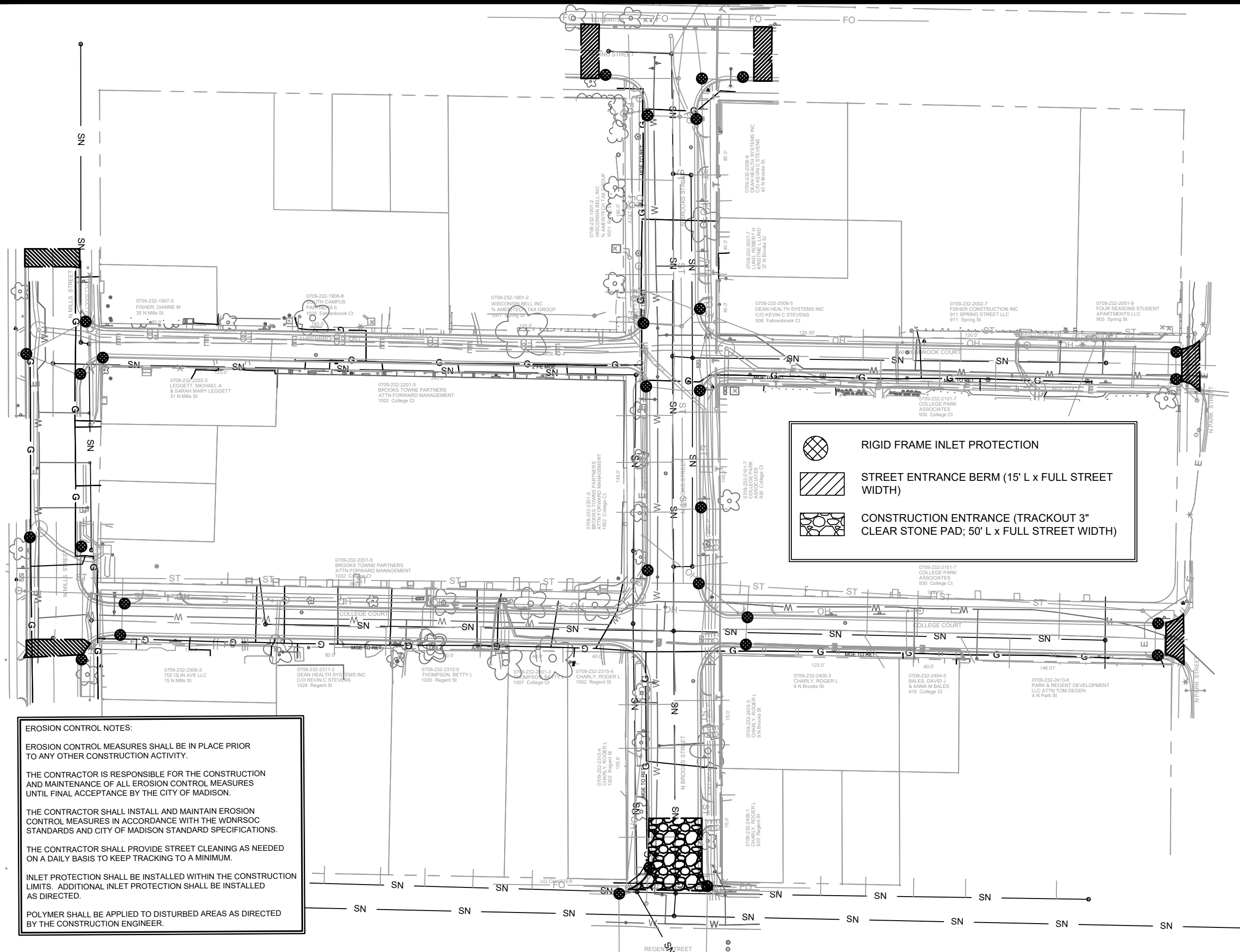
**Manhole MH02-007 Repairs**  
 Extend liner into manhole to limits shown. Power wash existing bench. Remove loose concrete.  
 Extend existing 8" sanitary with standard fernco and PVC pipe. Finish flush to channel wall.  
 Form for new bench topping flush to channel walls. Place 4000 psi concrete and finish level to top of liner.  
 Set 4'x4' manhole section with temporary blocks on manhole bench. Position as shown.  
 Form and place 1-1/2" flowable non-shrink grout at manhole section base as shown. After grout has set, remove temporary blocks and grout pack voids.  
 Fill annular space between new manhole section walls and old manhole walls with masonry grout. Finish to drain.



13180	13180	13180	13180	13180	13180
EXISTING MMSD MH02-007 DETAIL - FOR REFERENCE ONLY	MMSD	MMSD	MMSD	MMSD	MMSD
N BROOKS ST, FAHRENBERG BROOK CT & COLLEGE CT RES ASMNT DIST-2021	MADISON, WI	MADISON, WI	MADISON, WI	MADISON, WI	MADISON, WI
M:\DESIGN\Projects\13180\CAD\sewers\D-4 MMSD.dwg	8576	8576	8576	8576	8576
CONTRACT NO:	13180	13180	13180	13180	13180
DATE	4/27/21	4/27/21	4/27/21	4/27/21	4/27/21
BY	DAO	DAO	DAO	DAO	DAO
SCALE	#	#	#	#	#
D-4	D-4	D-4	D-4	D-4	D-4



13180  
D-4



**EROSION CONTROL NOTES:**

EROSION CONTROL MEASURES SHALL BE IN PLACE PRIOR TO ANY OTHER CONSTRUCTION ACTIVITY.

THE CONTRACTOR IS RESPONSIBLE FOR THE CONSTRUCTION AND MAINTENANCE OF ALL EROSION CONTROL MEASURES UNTIL FINAL ACCEPTANCE BY THE CITY OF MADISON.

THE CONTRACTOR SHALL INSTALL AND MAINTAIN EROSION CONTROL MEASURES IN ACCORDANCE WITH THE WDNR SOC STANDARDS AND CITY OF MADISON STANDARD SPECIFICATIONS.

THE CONTRACTOR SHALL PROVIDE STREET CLEANING AS NEEDED ON A DAILY BASIS TO KEEP TRACKING TO A MINIMUM.

INLET PROTECTION SHALL BE INSTALLED WITHIN THE CONSTRUCTION LIMITS. ADDITIONAL INLET PROTECTION SHALL BE INSTALLED AS DIRECTED.

POLYMER SHALL BE APPLIED TO DISTURBED AREAS AS DIRECTED BY THE CONSTRUCTION ENGINEER.

	RIGID FRAME INLET PROTECTION
	STREET ENTRANCE BERM (15' L x FULL STREET WIDTH)
	CONSTRUCTION ENTRANCE (TRACKOUT 3" CLEAR STONE PAD; 50' L x FULL STREET WIDTH)

MARK	REVISION	DATE	BY

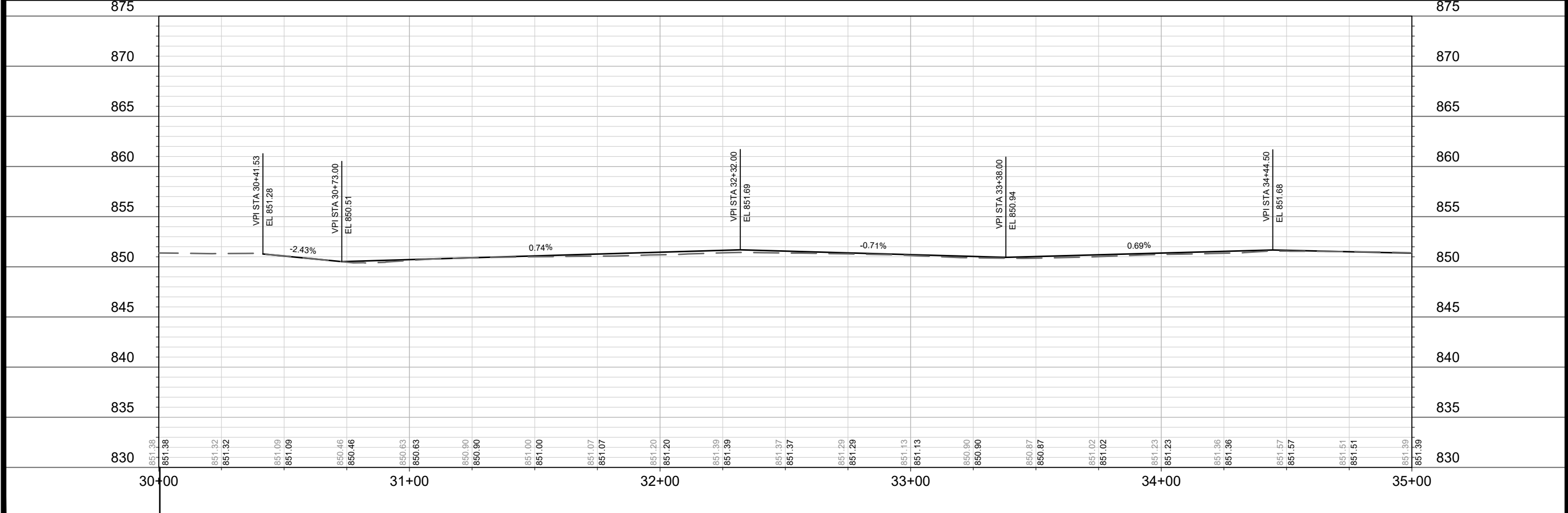
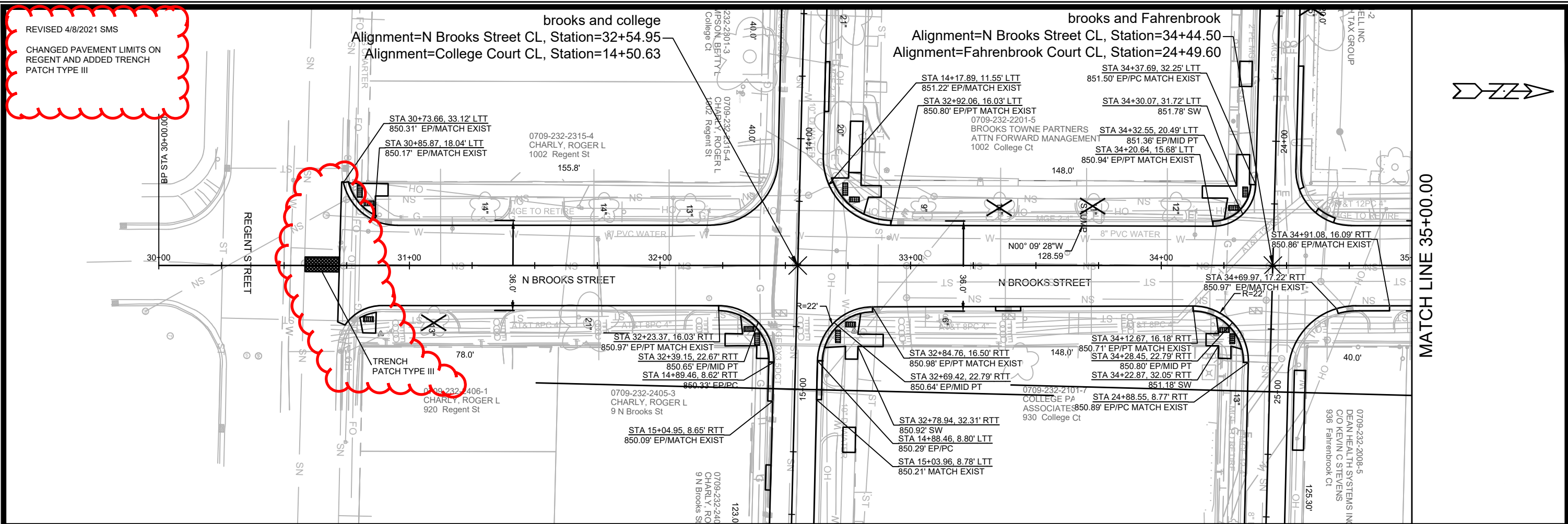
13180  
 MADISON, WI  
 CONTRACT NO: 8576

EROSION CONTROL PLAN  
 N BROOKS ST, FAHRENBROOK CT & COLLEGE CT RES ASMNT DIST-2021  
 M:\DESIGN\Projects\13180\CAD\Server\13180\EROSION CONTROL.dwg



13180  
 EC-1

REVISED 4/8/2021 SMS  
 CHANGED PAVEMENT LIMITS ON  
 REGEN AND ADDED TRENCH  
 PATCH TYPE III

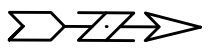
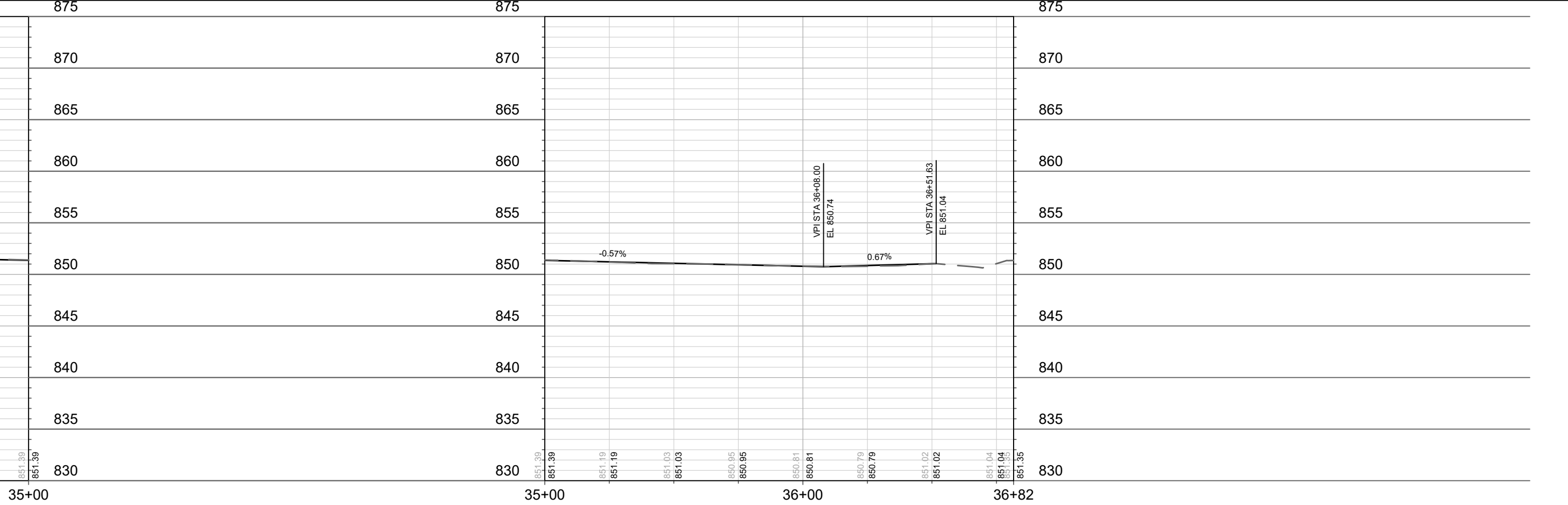
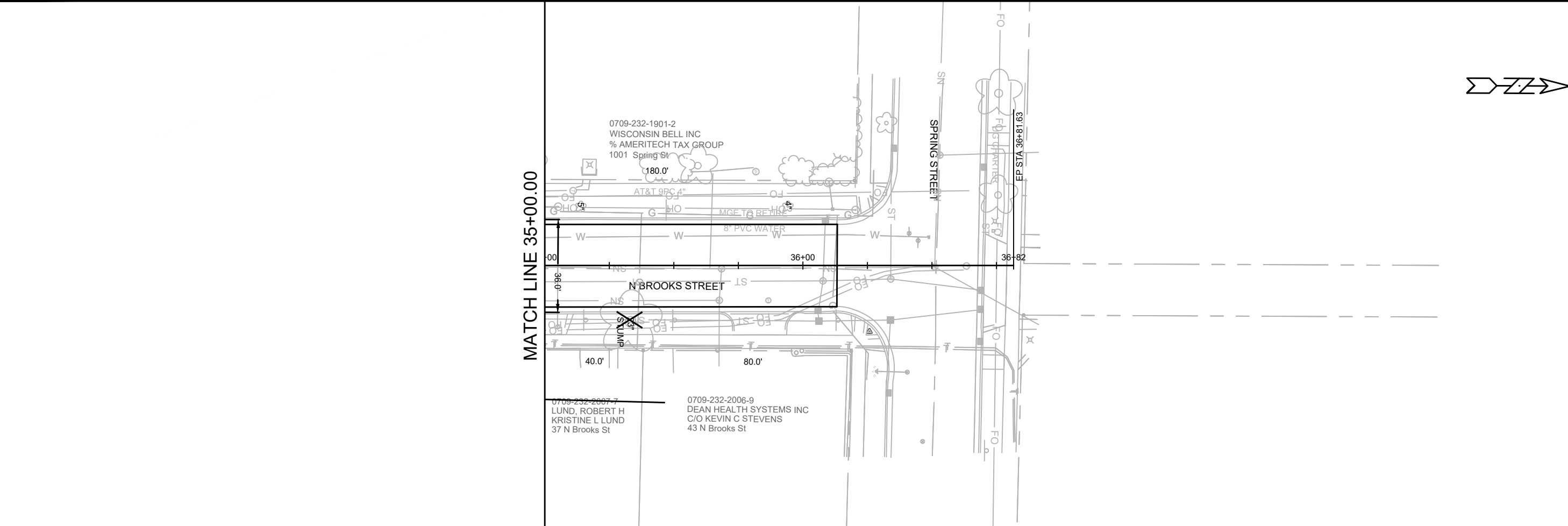


MARK	REVISION	DATE	BY

13180  
 MADISON, WI  
 CONTRACT NO: 8576

PLAN & PROFILE NORTH BROOKS STREET  
 N BROOKS ST, FAHRENBROOK CT & COLLEGE CT RES ASMNT DIST-2021  
 M:\DESIGN\Projects\13180\CAD\Streets\13180EN-Streets Corridor.dwg



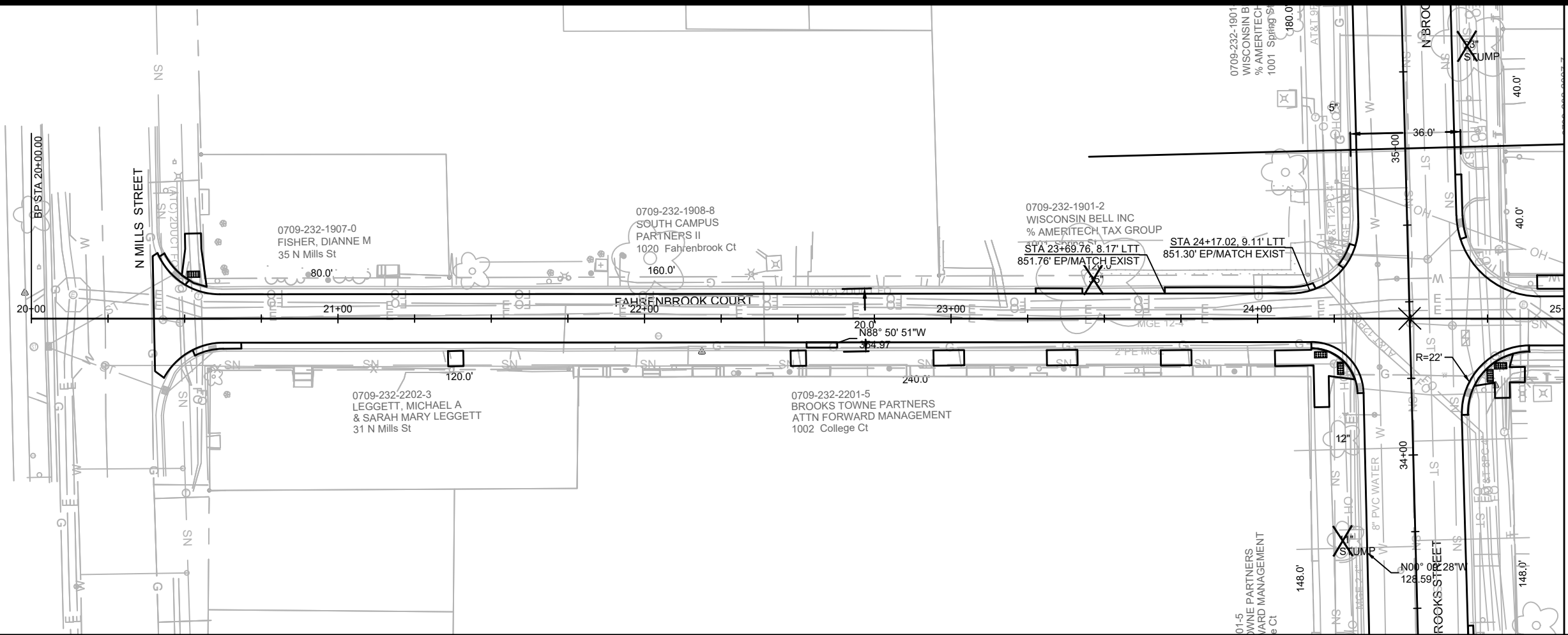


MARK	REVISION	DATE	BY
13180	4/27/2021 1:30 PM		
Designed By: 13180		Scale: #####	
Contract No: 8576		P-2	

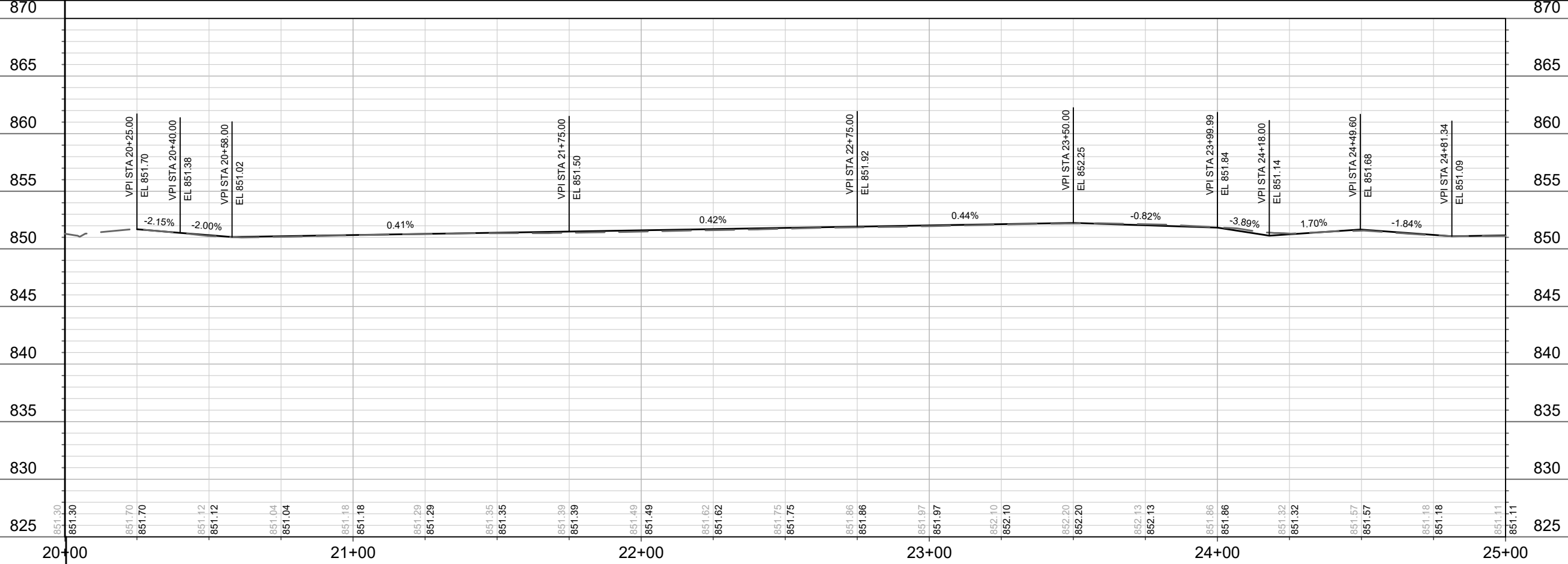
13180  
 PLAN & PROFILE NORTH BROOKS STREET  
 N BROOKS ST, FAHRENBROOK CT & COLLEGE CT RES ASMNT DIST-2021  
 MADISON, WI  
 CONTRACT NO: 8576  
 M:\DESIGN\Projects\13180\CAD\Streets\13180EN-Streets Corridor.dwg







MATCH LINE 25+00.00



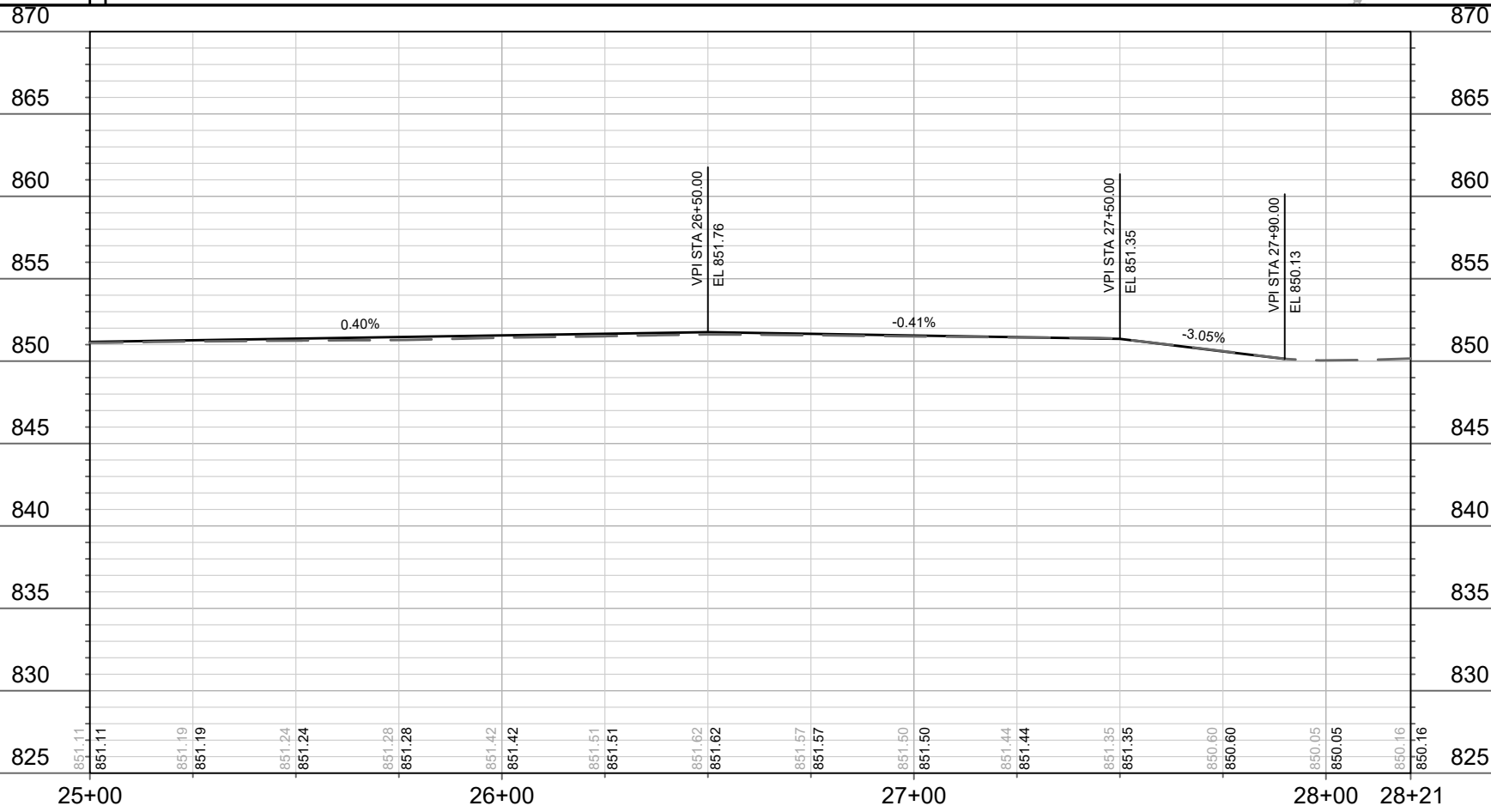
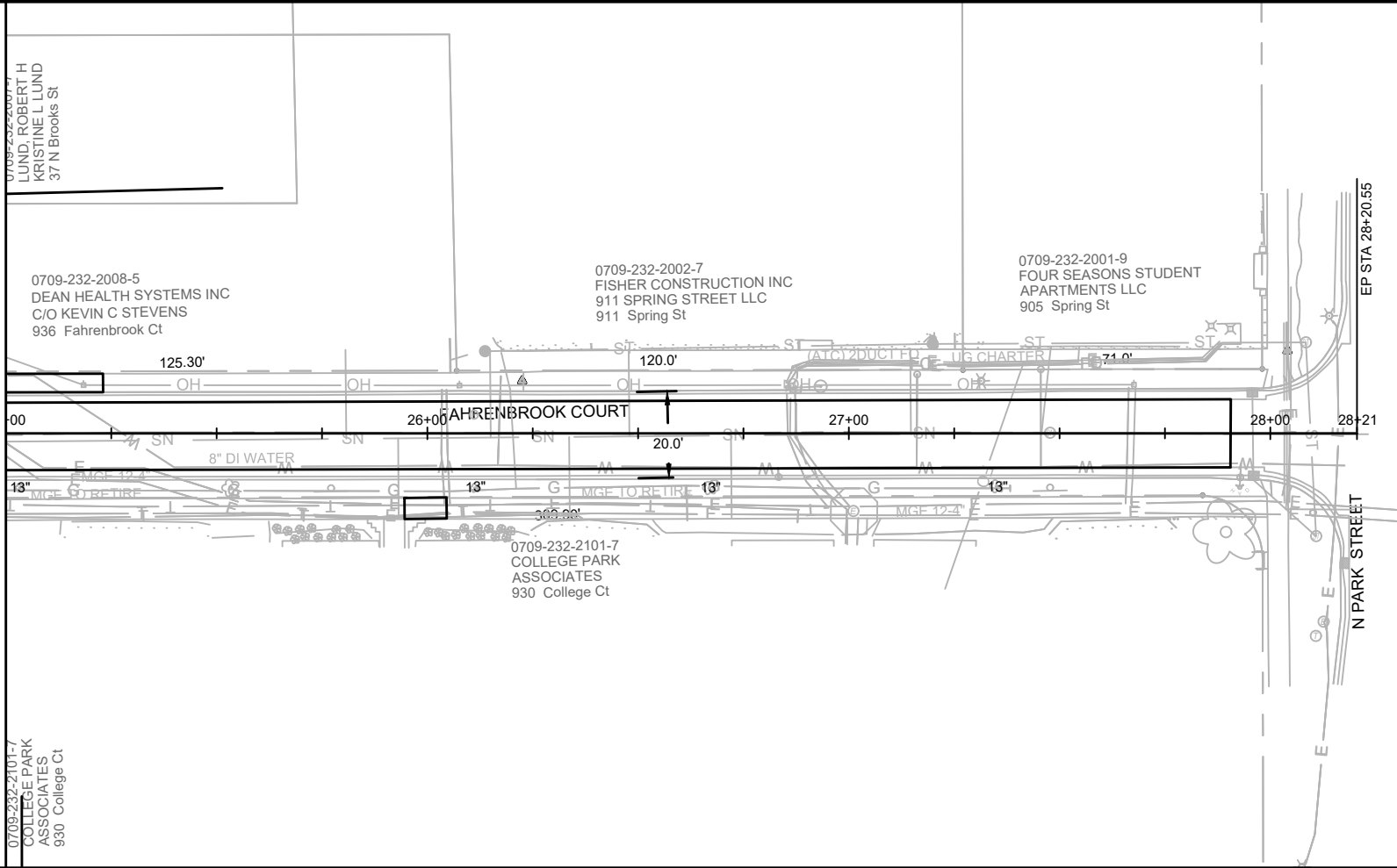
MARK	REVISION	DATE	BY

13180  
 PLAN & PROFILE FAHRENBROOK COURT  
 N BROOKS ST, FAHRENBROOK CT & COLLEGE CT RES ASMNT DIST-2021 MADISON, WI  
 M:\DESIGN\Projects\13180\CAD\Streets\13180EN-Streets Corridor.dwg  
 CONTRACT NO: 8576



13180  
 P-3

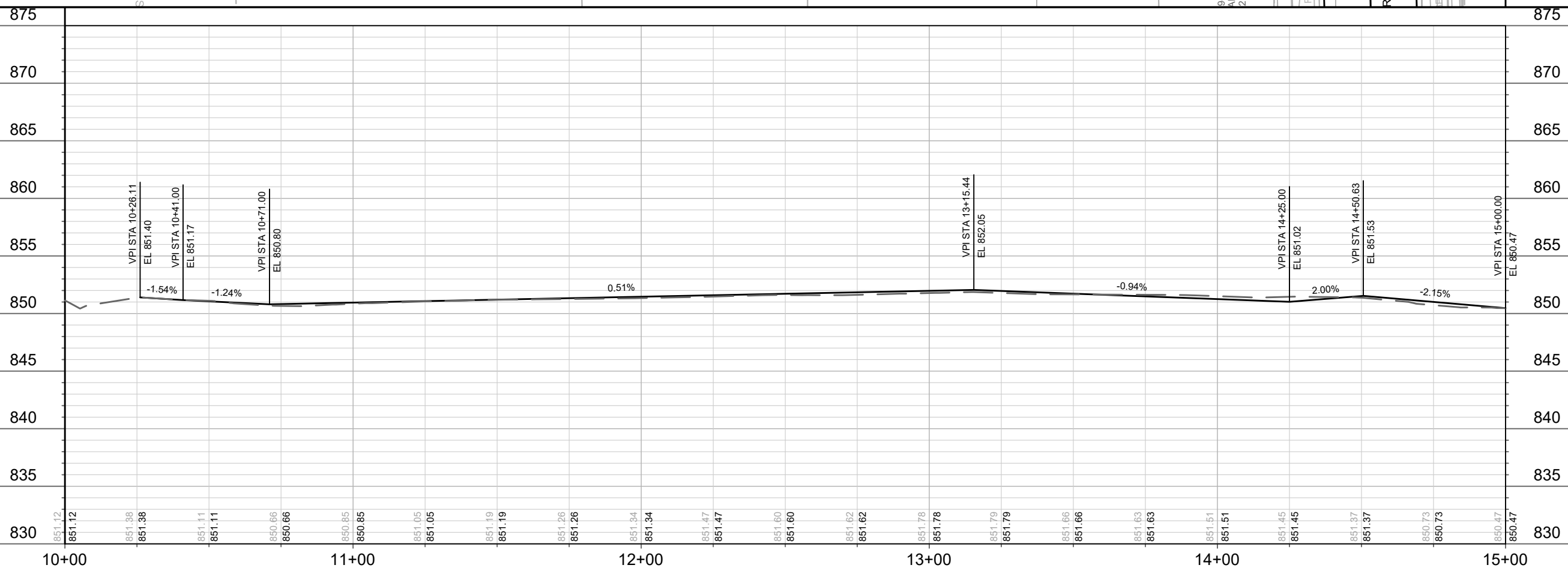
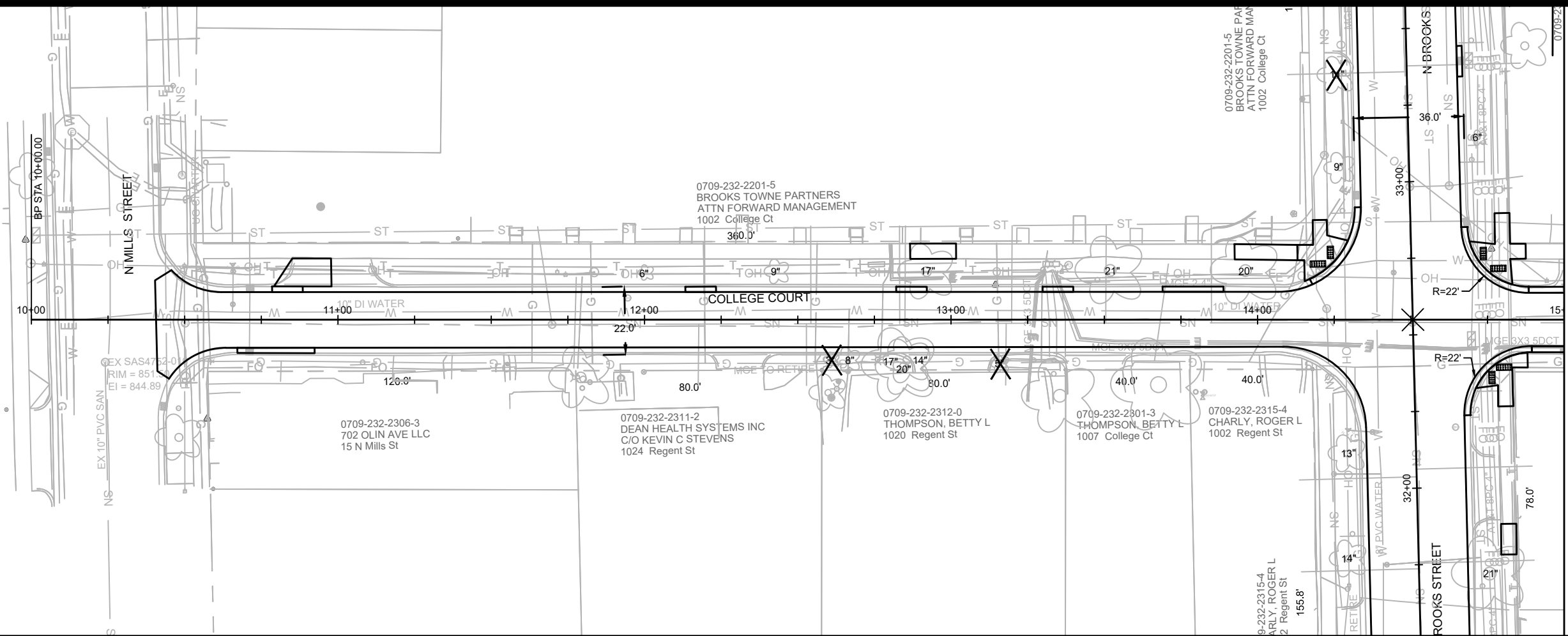
MATCH LINE 25+00.00



MARK	REVISION	DATE	BY
13180	4/27/2021	1:31 PM	P-4

13180  
 PLAN & PROFILE FAHRENBROOK COURT  
 N BROOKS ST, FAHRENBROOK CT & COLLEGE CT RES ASMNT DIST-2021 MADISON, WI  
 CONTRACT NO: 8576  
 M:\DESIGN\Projects\13180\CAD\Streets\13180EN-Streets Corridor.dwg

13180  
 P-4



MATCH LINE 15+00.00



MARK	REVISION	DATE	BY

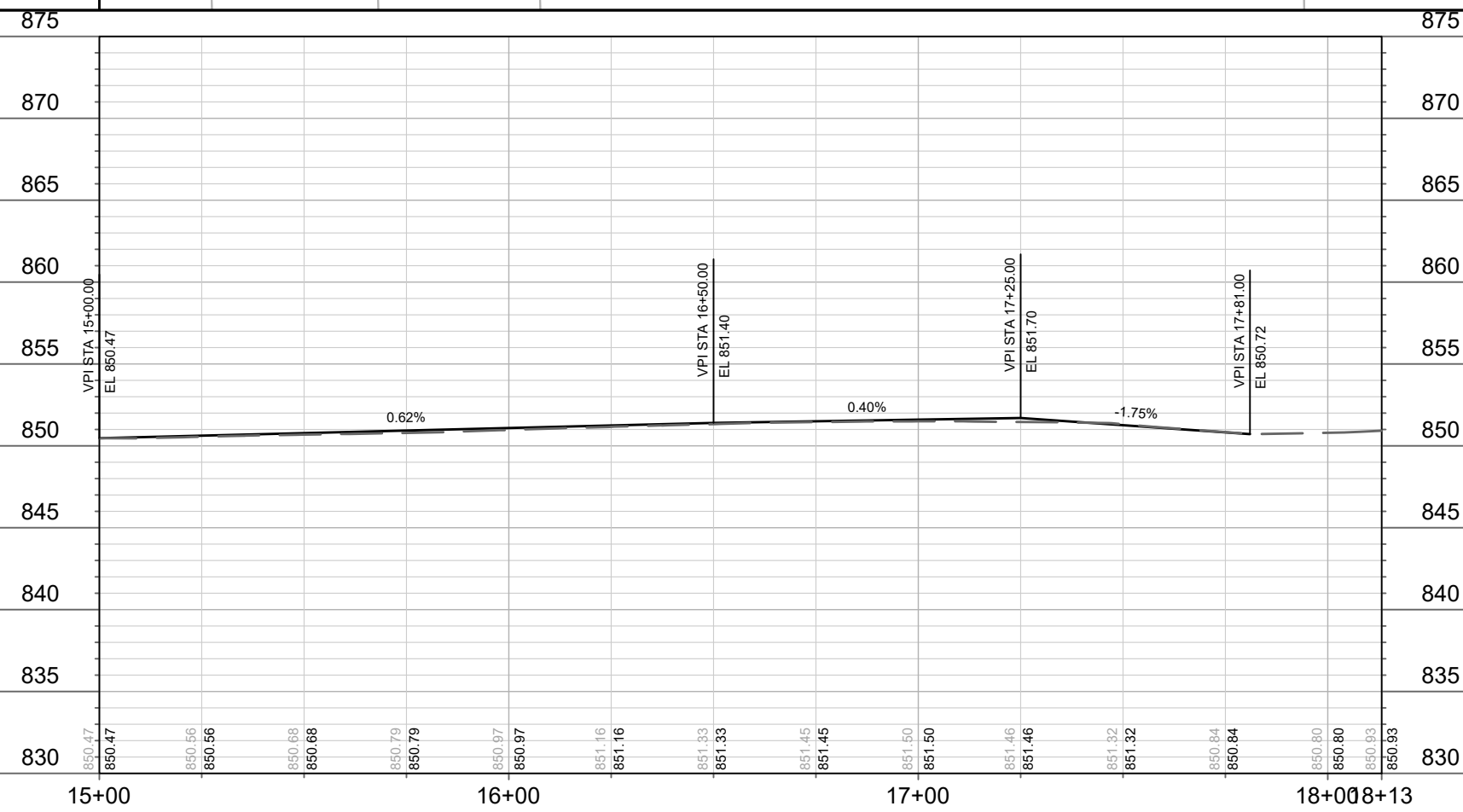
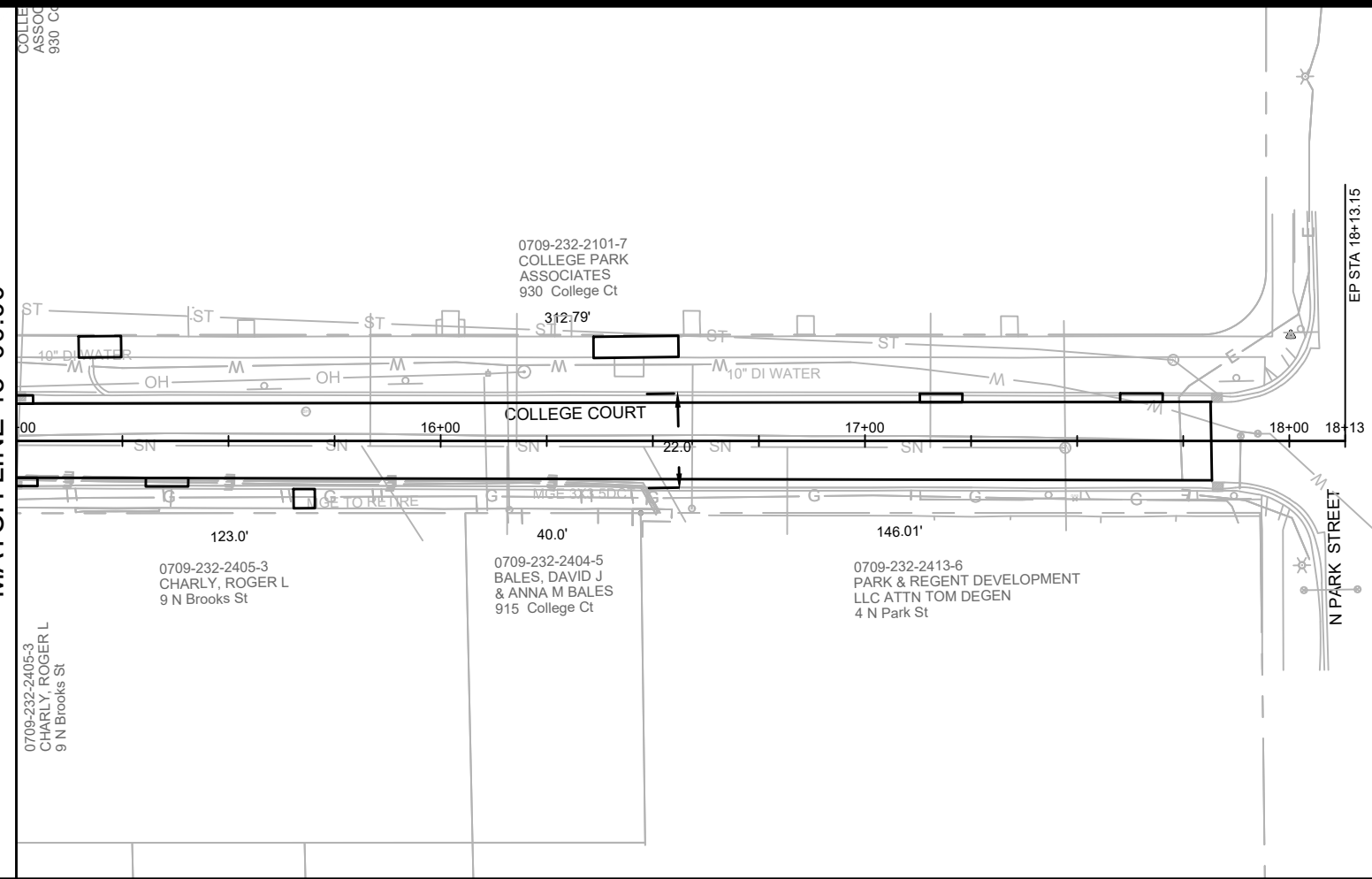
13180  
 MADISON, WI  
 CONTRACT NO: 8576

PLAN & PROFILE COLLEGE COURT  
 N BROOKS ST, FAHRENBRÖCK CT & COLLEGE CT RES ASMNT DIST-2021  
 M:\DESIGN\Projects\13180\CAD\Streets\13180EN-Streets Corridor.dwg



13180  
 P-5

MATCH LINE 15+00.00

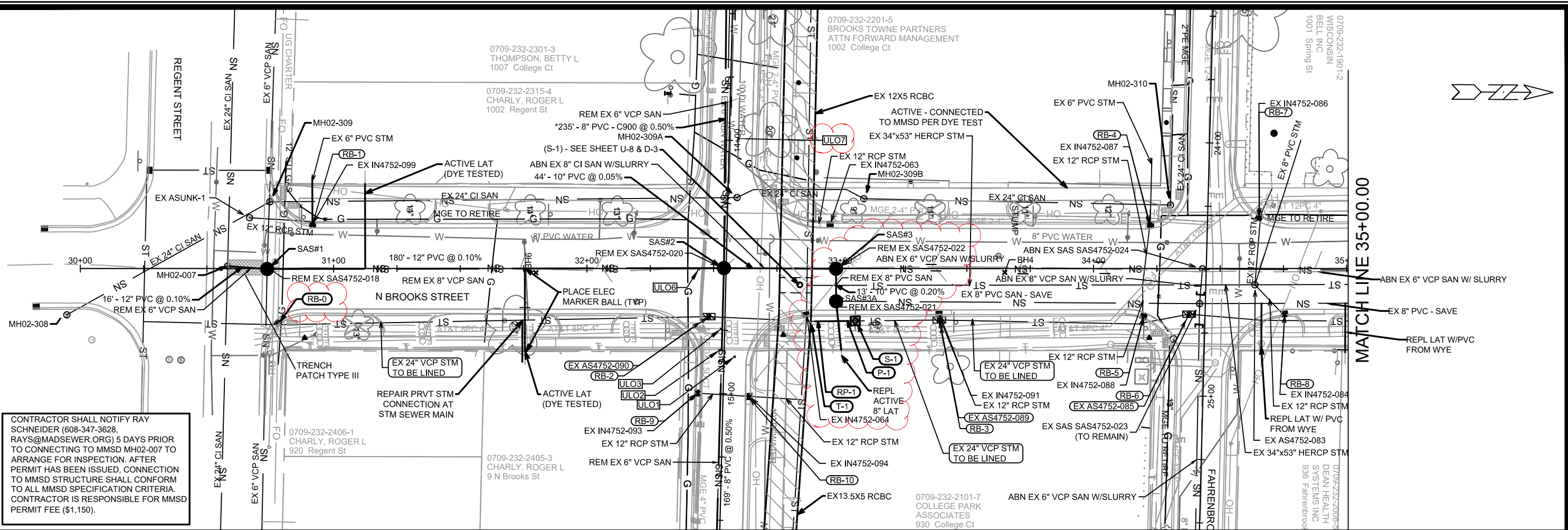


MARK	REVISION	DATE	BY
13180	4/27/2021	1:31 PM	
Designed By: ---		Scale: #####	
13180		P-6	

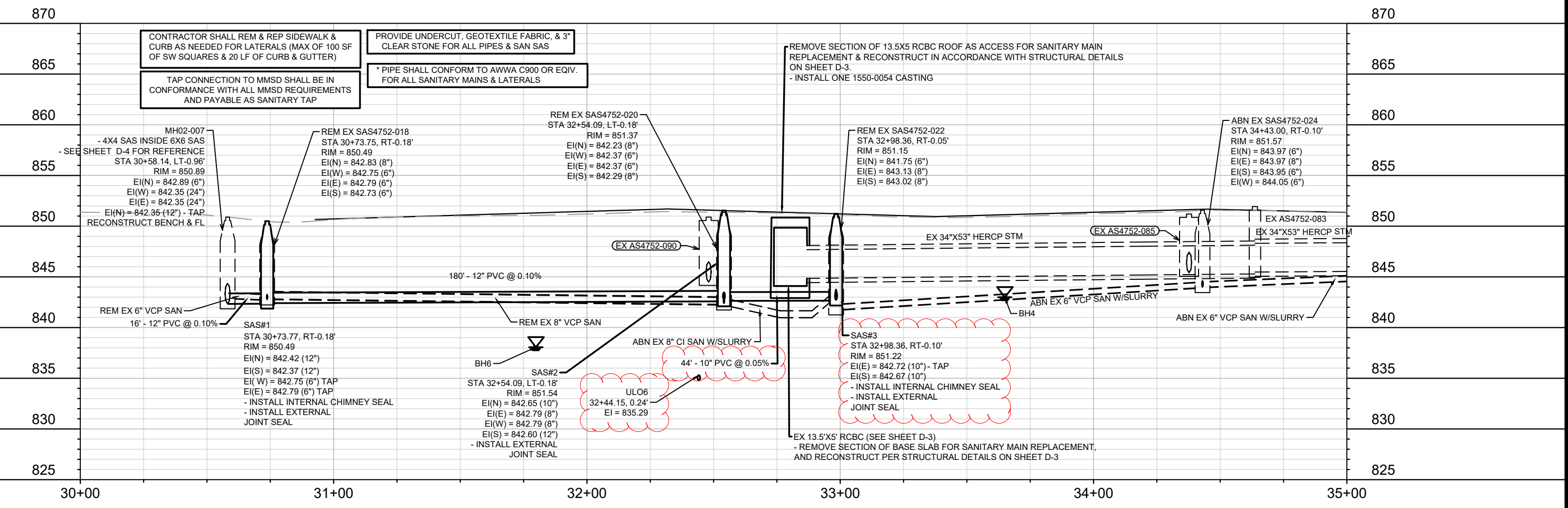
13180  
 PLAN & PROFILE COLLEGE COURT  
 N BROOKS ST, FAHRENBROOK CT & COLLEGE CT RES ASMNT DIST-2021 MADISON, WI  
 M:\DESIGN\Projects\13180\CAD\Streets\13180EN-Streets Corridor.dwg  
 CONTRACT NO: 8576



13180  
 P-6



CONTRACTOR SHALL NOTIFY RAY SCHNEIDER (608-347-3628, RAYS@MADSEWER.ORG) 5 DAYS PRIOR TO CONNECTING TO MMSD MH02-007 TO ARRANGE FOR INSPECTION. AFTER PERMIT HAS BEEN ISSUED, CONNECTION TO MMSD STRUCTURE SHALL CONFORM TO ALL MMSD SPECIFICATION CRITERIA. CONTRACTOR IS RESPONSIBLE FOR MMSD PERMIT FEE (\$1,150).



CONTRACTOR SHALL REM & REP SIDEWALK & CURB AS NEEDED FOR LATERALS (MAX OF 100 SF OF SW SQUARES & 20 LF OF CURB & GUTTER)

TAP CONNECTION TO MMSD SHALL BE IN CONFORMANCE WITH ALL MMSD REQUIREMENTS AND PAYABLE AS SANITARY TAP

PROVIDE UNDERCUT, GEOTEXTILE FABRIC, & 3\"/>

\* PIPE SHALL CONFORM TO AWWA C900 OR EQUIV. FOR ALL SANITARY MAINS & LATERALS

REMOVE SECTION OF 13.5X5 RCBC ROOF AS ACCESS FOR SANITARY MAIN REPLACEMENT & RECONSTRUCT IN ACCORDANCE WITH STRUCTURAL DETAILS ON SHEET D-3.

- INSTALL ONE 1550-0054 CASTING

MH02-007  
- 4X4 SAS INSIDE 6X6 SAS  
- SEE SHEET D-4 FOR REFERENCE  
STA 30+58.14, LT-0.96'  
RIM = 850.89  
EI(N) = 842.89 (6")  
EI(W) = 842.35 (24")  
EI(E) = 842.35 (24")  
EI(S) = 842.35 (12") - TAP  
RECONSTRUCT BENCH & FL

REM EX SAS4752-018  
STA 30+73.75, RT-0.18'  
RIM = 850.49  
EI(N) = 842.83 (8")  
EI(W) = 842.75 (6")  
EI(E) = 842.79 (6")  
EI(S) = 842.73 (6")

SAS#1  
STA 30+73.77, RT-0.18'  
RIM = 850.49  
EI(N) = 842.42 (12")  
EI(S) = 842.37 (12")  
EI(W) = 842.75 (6") TAP  
EI(E) = 842.79 (6") TAP  
- INSTALL INTERNAL CHIMNEY SEAL  
- INSTALL EXTERNAL JOINT SEAL

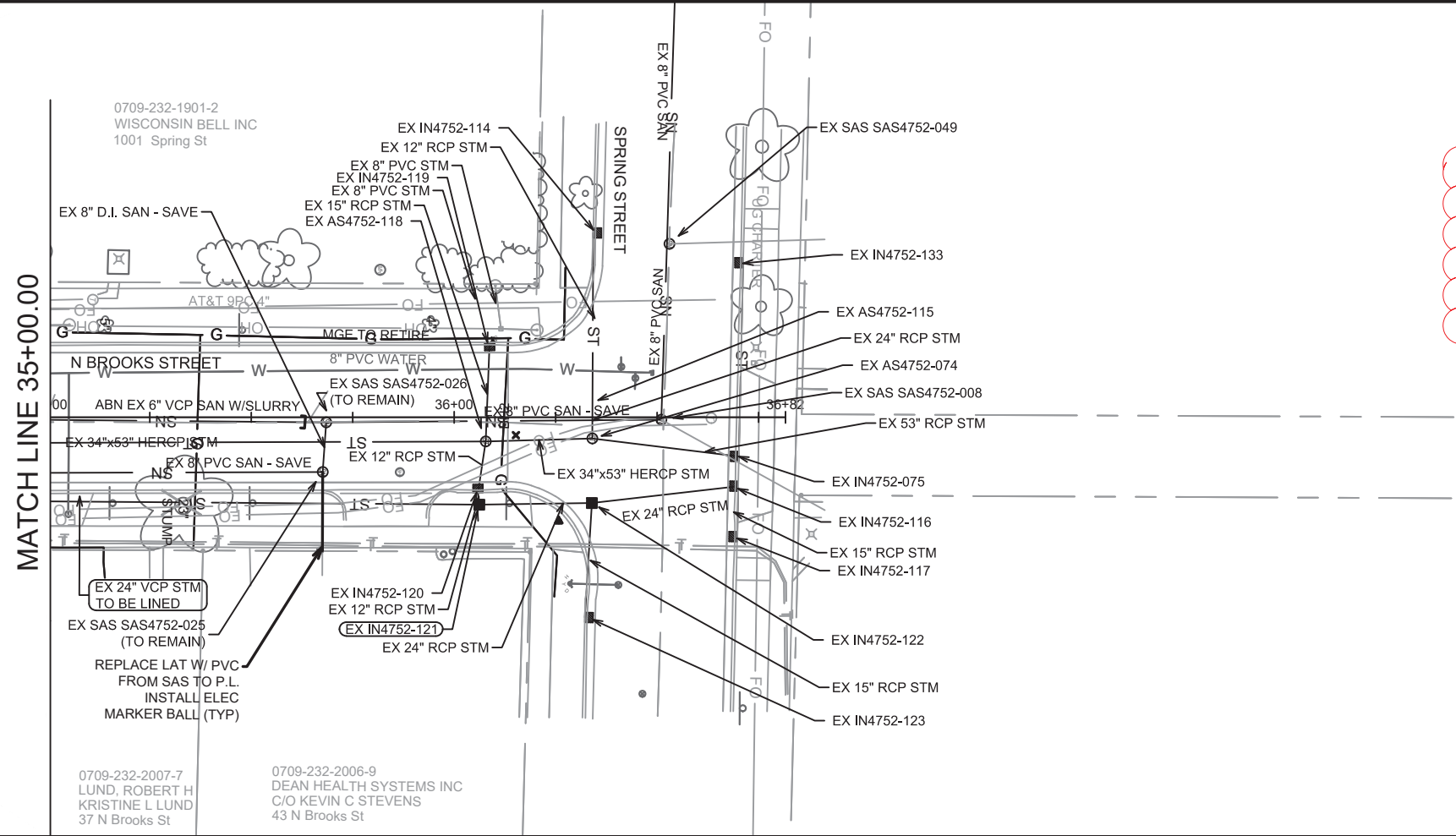
SAS#2  
STA 32+54.09, LT-0.18'  
RIM = 851.54  
EI(N) = 842.65 (10")  
EI(E) = 842.79 (8")  
EI(W) = 842.79 (8")  
EI(S) = 842.60 (12")  
- INSTALL EXTERNAL JOINT SEAL

ULO6  
32+44.15, 0.24'  
EI = 835.29

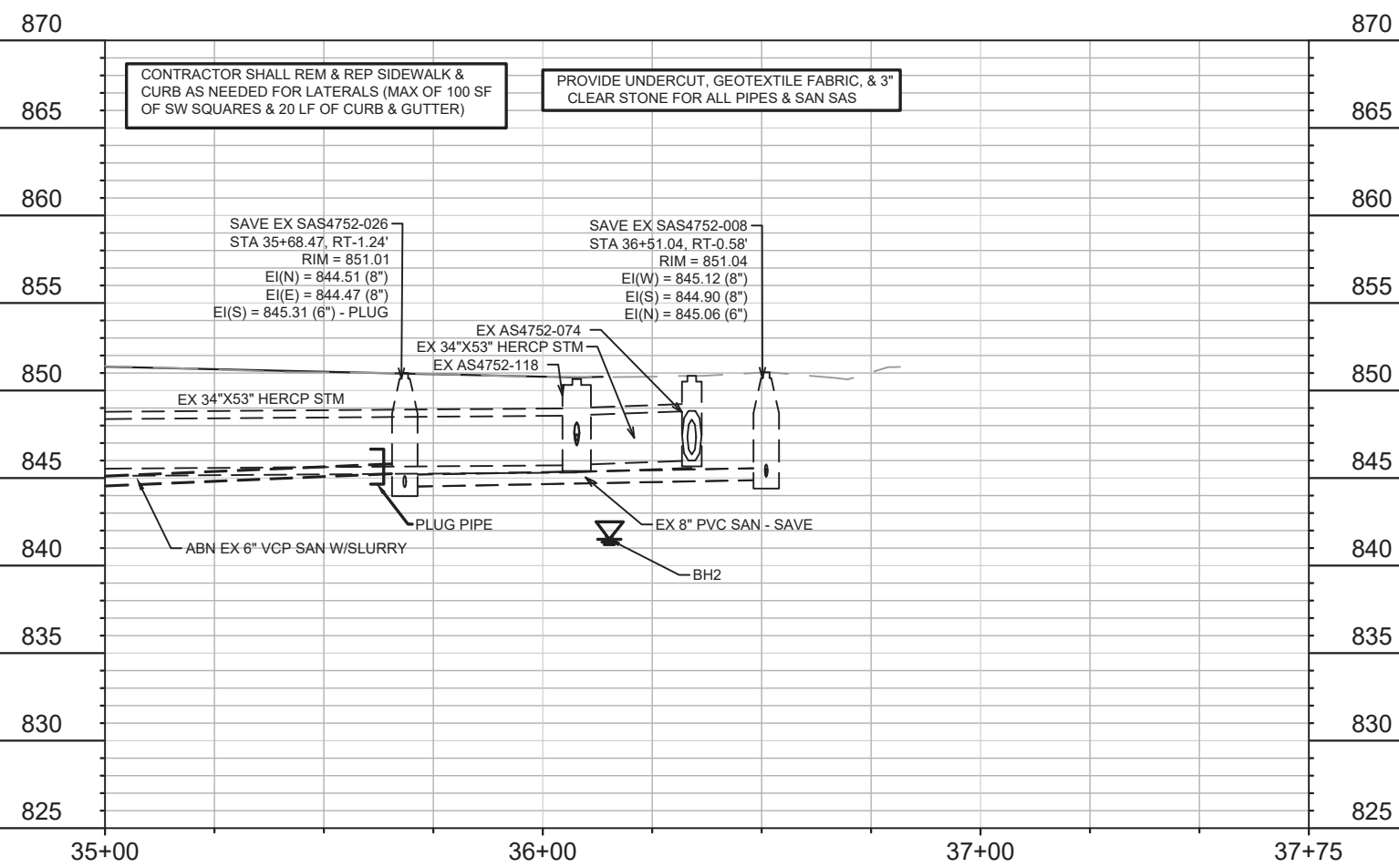
SAS#3  
STA 32+98.36, RT-0.10'  
RIM = 851.22  
EI(E) = 842.72 (10") - TAP  
EI(S) = 842.67 (10")  
- INSTALL INTERNAL CHIMNEY SEAL  
- INSTALL EXTERNAL JOINT SEAL

ABN EX SAS4752-024  
STA 34+43.00, RT-0.10'  
RIM = 851.57  
EI(N) = 843.97 (6")  
EI(E) = 843.97 (8")  
EI(S) = 843.95 (6")  
EI(W) = 844.05 (6")

U-1	13180	8576	U-1
REVISION 1	7/14/21	DAO	U-1
ADDENDUM 2	4/26/21	DAO	U-1
REVISION 2	7/14/21	DAO	U-1
MARK	DATE	BY	U-1
DESIGNED BY: DAO	DATE: 7/14/2021 3:17 PM	SCALE: #####	U-1
13180	13180	8576	U-1
SEWER UTILITY PLAN & PROFILE - N BROOKS ST			
N BROOKS ST, FAHRENBERG CT & COLLEGE CT RES ASMNT DIST-2021 MADISON, WI			
M:\DESIGN\Projects\13180\CAD\Sewers\13180SEWERS_LAYOUT.dwg			
13180			
U-1			



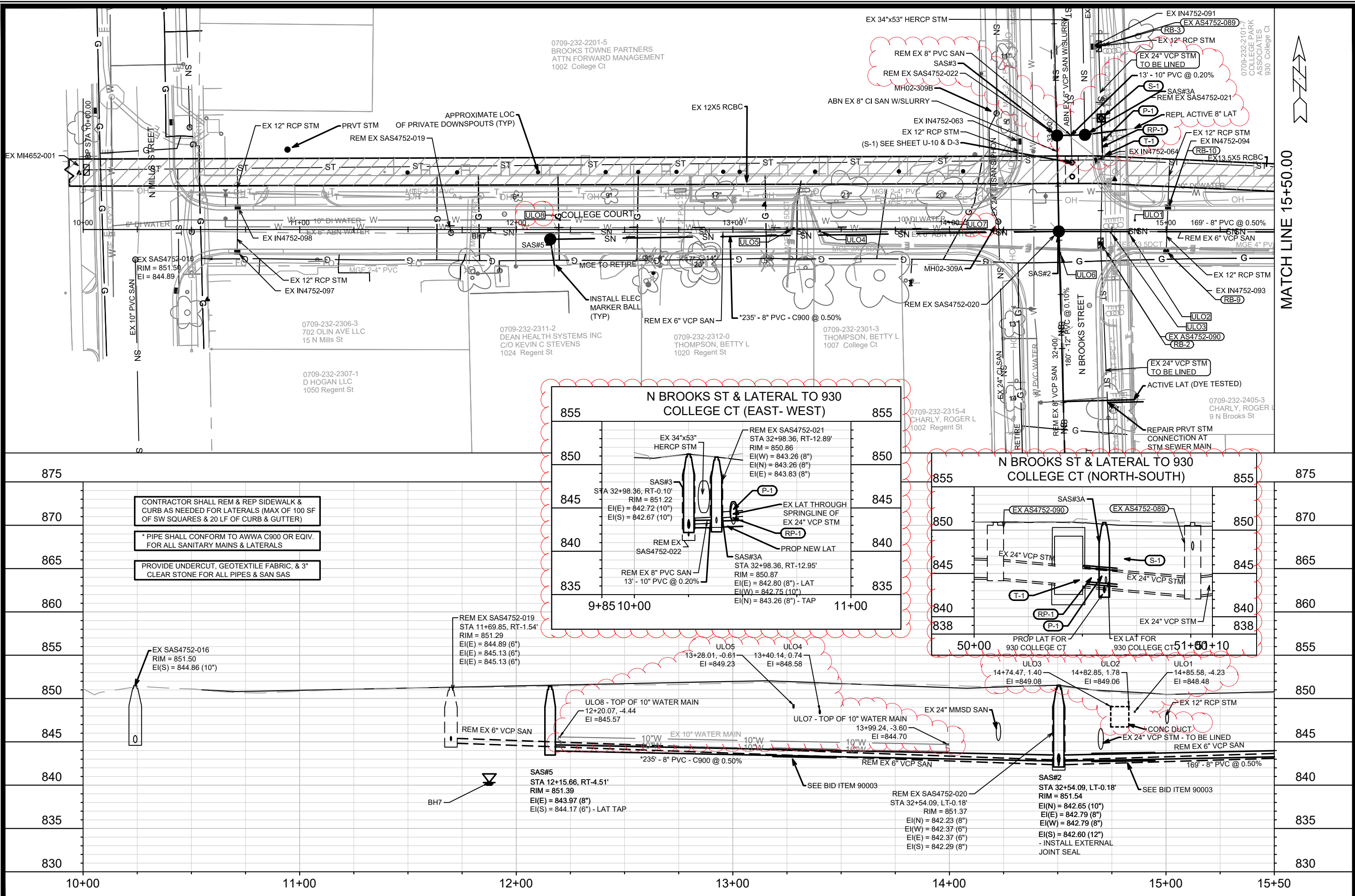
ALL PROPOSED  
 SANITARY HAS BEEN  
 CHANGED FOR  
 ADDENDUM 2



CONTRACTOR SHALL REM & REP SIDEWALK & CURB AS NEEDED FOR LATERALS (MAX OF 100 SF OF SW SQUARES & 20 LF OF CURB & GUTTER)

PROVIDE UNDERCUT, GEOTEXTILE FABRIC, & 3" CLEAR STONE FOR ALL PIPES & SAN SAS

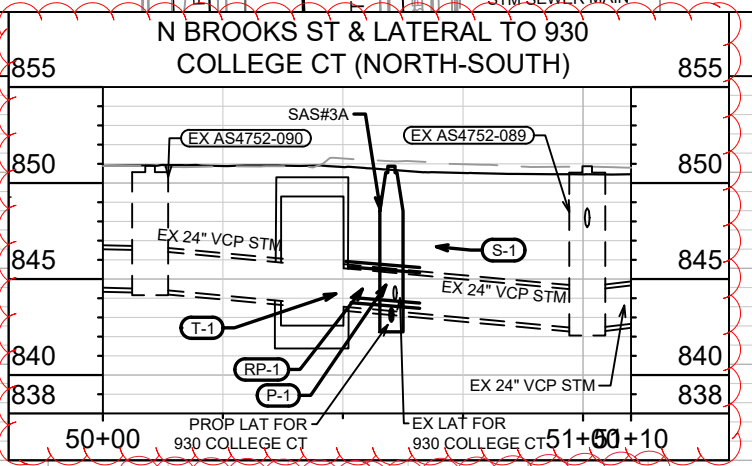
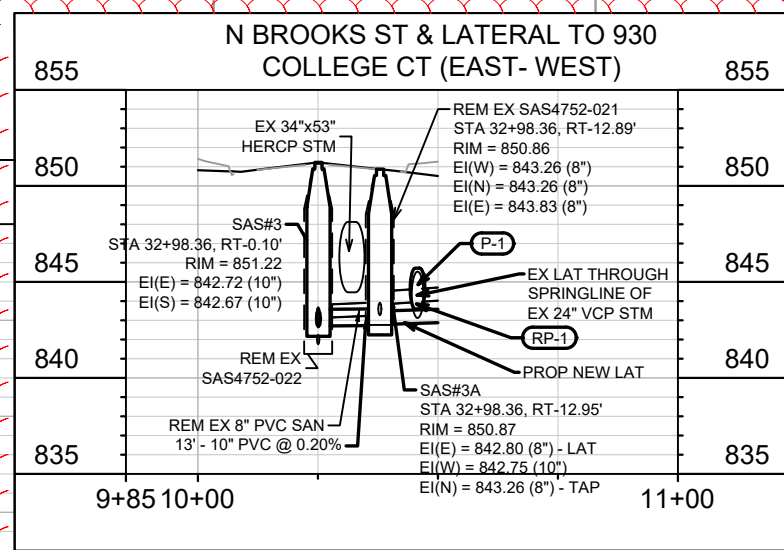
13180	ADDENDUM 2	DATE	BY	U-2
13180	REVISION	Date: 4/27/2021 11:28 AM	Scale: #####	U-2
SEWER UTILITY PLAN & PROFILE - N BROOKS ST N BROOKS ST, FAHRENBROOK CT & COLLEGE CT RES ASMNT DIST-2021 MADISON, WI M:\DESIGN\Projects\13180\CAD\SEWERS\13180SEWERS_LAYOUT.dwg				
CONTRACT NO: 8576				
13180				
U-2				



CONTRACTOR SHALL REM & REP SIDEWALK & CURB AS NEEDED FOR LATERALS (MAX OF 100 SF OF SW SQUARES & 20 LF OF CURB & GUTTER)

\* PIPE SHALL CONFORM TO AWWA C900 OR EQUIV. FOR ALL SANITARY MAINS & LATERALS

PROVIDE UNDERCUT, GEOTEXTILE FABRIC, & 3" CLEAR STONE FOR ALL PIPES & SAN SAS



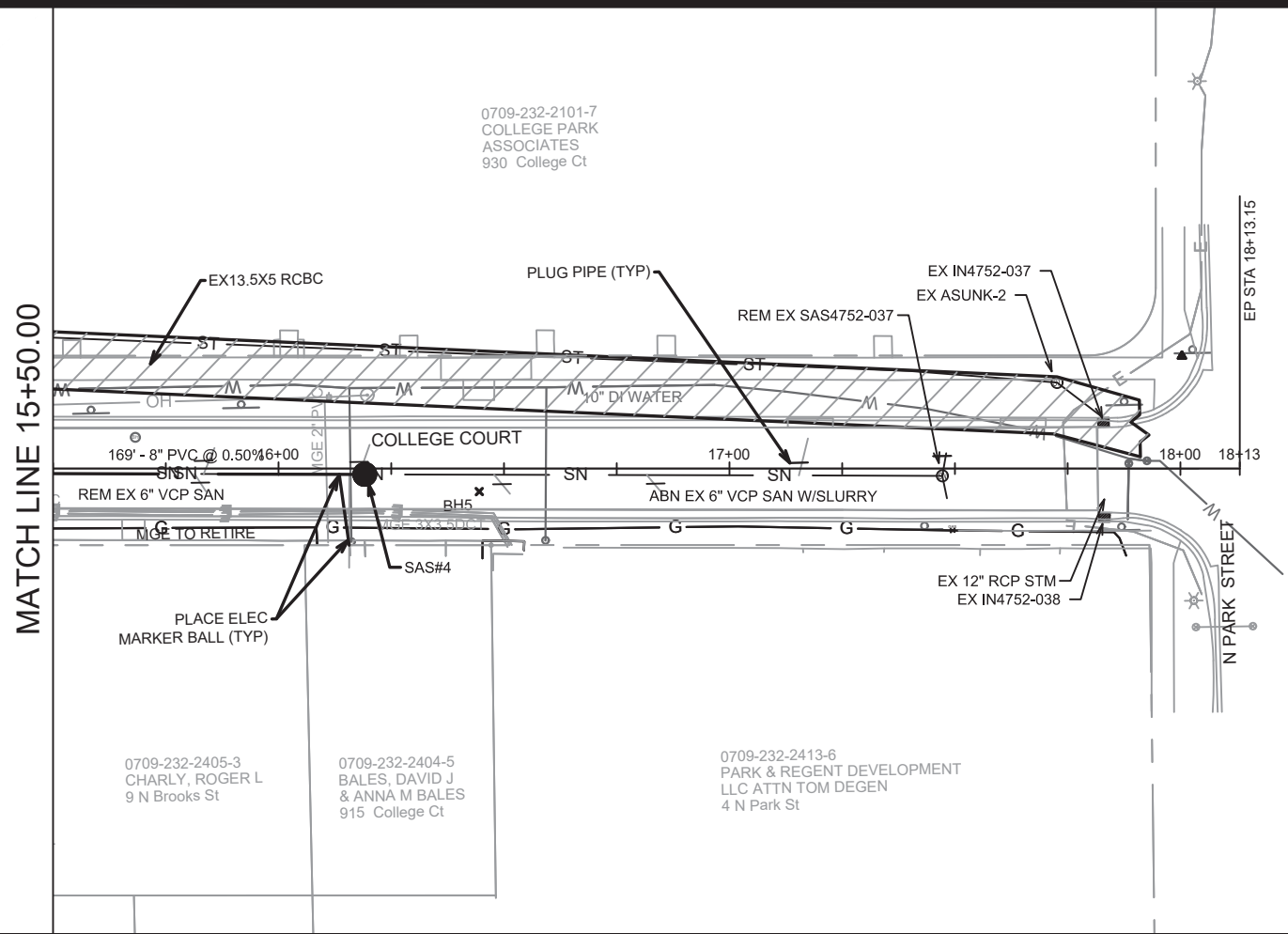
MATCH LINE 15+50.00

13180	REVISION 1	7/14/21	DAO	U-3
	ADDENDUM 2	4/26/21	DAO	
	REVISION	DATE	BY	
	MARK	DATE	BY	
	Designed By: DAO	Date: 7/14/2021	3:17 PM	Scale: #####
13180				U-3

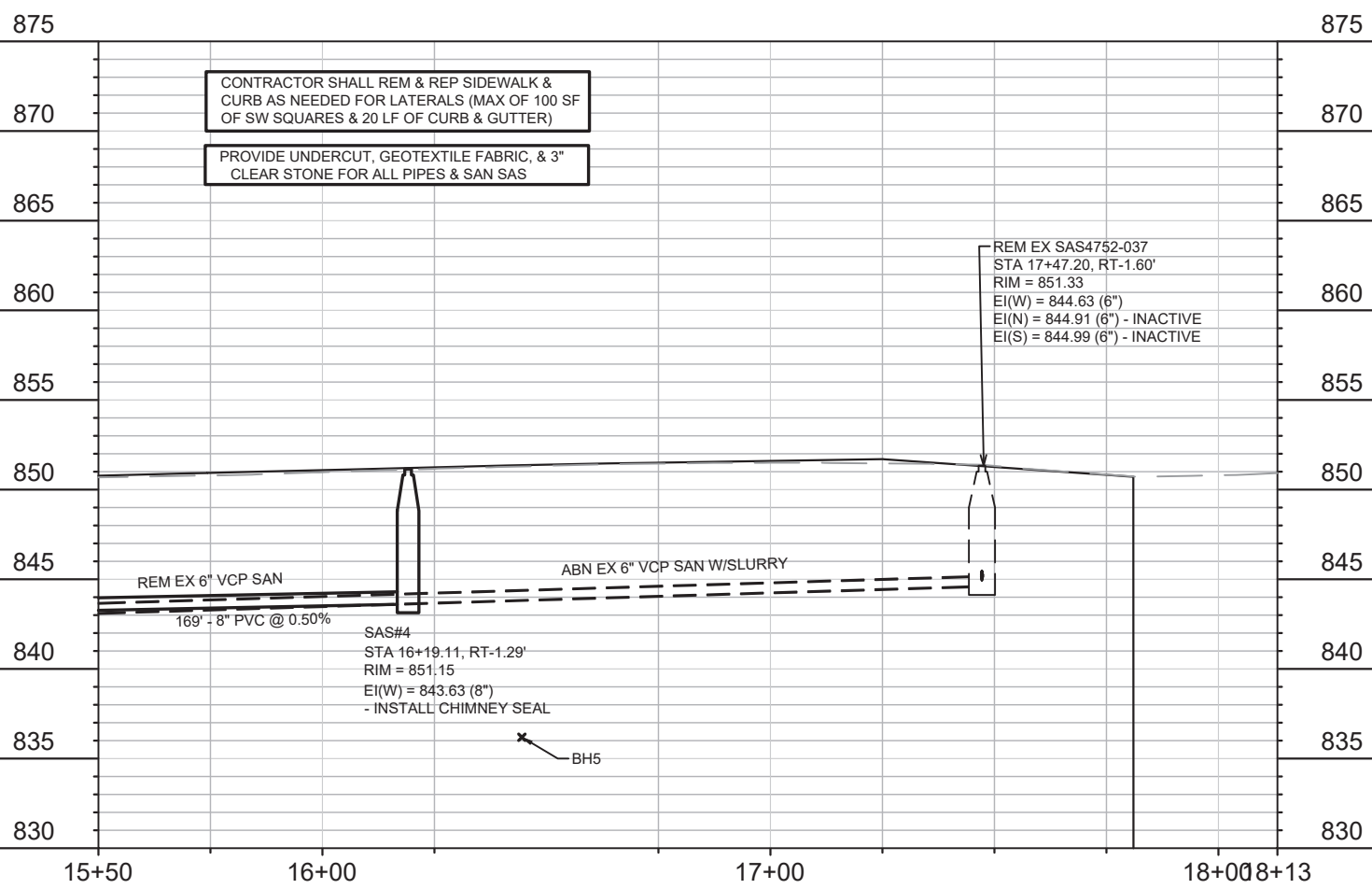
13180	MADISON, WI	CONTRACT NO: 8576	U-3
SEWER UTILITY PLAN & PROFILE - COLLEGE CT			
N BROOKS ST, FAHRENBROOK CT & COLLEGE CT RES ASMNT DIST-2021			
M:\DESIGN\Projects\13180\CAD\Drawings\13180SEWERS_LAYOUT(E-W).dwg			
CITY OF MADISON WISCONSIN		13180	
U-3		U-3	

0709-232-2101-7  
COLLEGE PARK  
ASSOCIATES  
930 College Ct



**ALL PROPOSED  
SANITARY HAS BEEN  
CHANGED FOR  
ADDENDUM 2**

MARK	DATE	BY
ADDENDUM 2	4/26/21	DAO
REVISION	Date: 4/26/2021 3:54 PM	Scale: #####
13180		U-4



13180

8576

SEWER UTILITY PLAN & PROFILE - COLLEGE CT

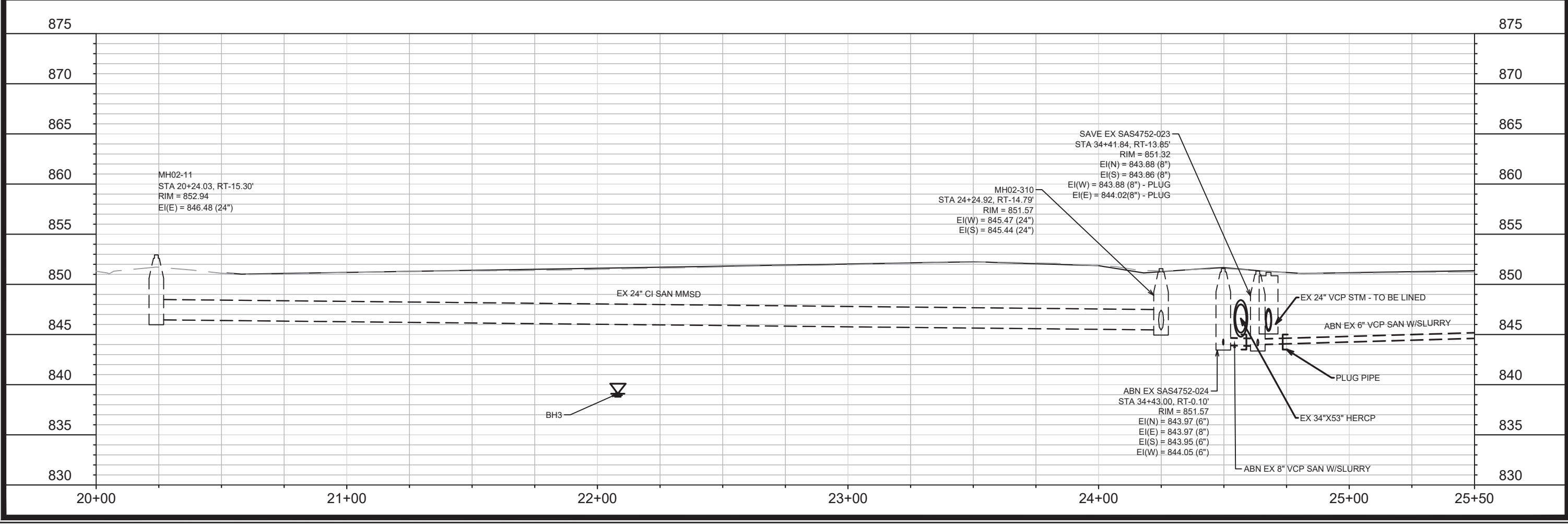
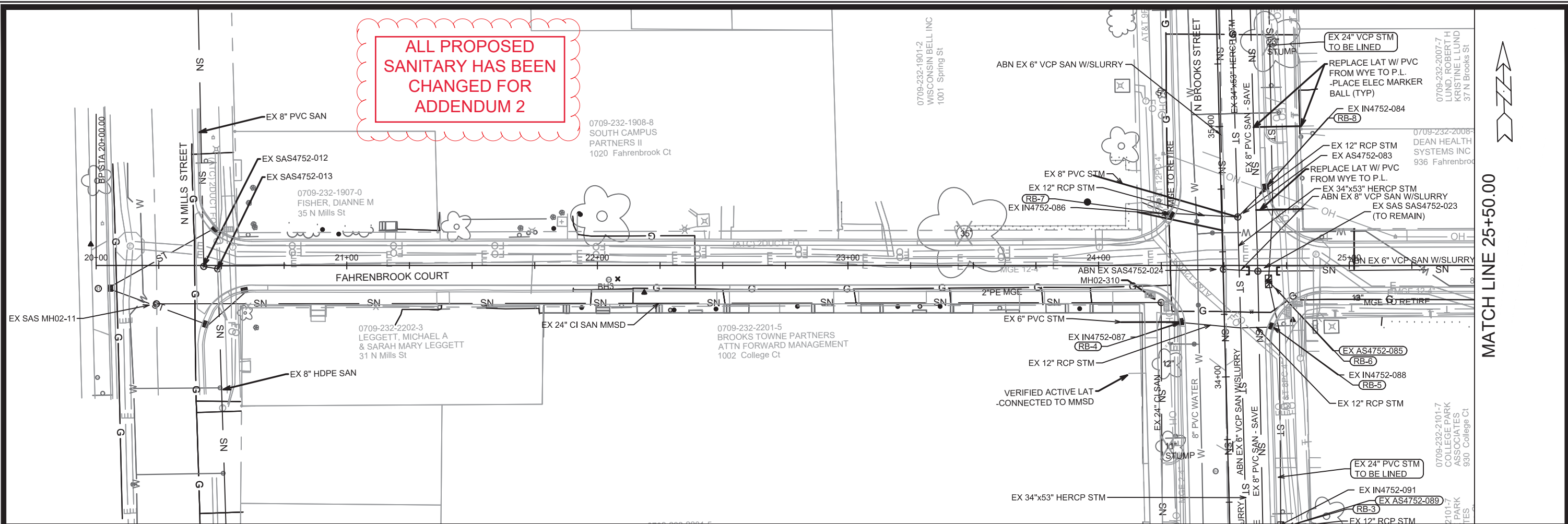
N BROOKS ST, FAHRENBROOK CT & COLLEGE CT RES ASMT DIST-2021 MADISON, WI

M:\DESIGN\Projects\13180\CAD\SEWERS\13180SEWERS\_LAYOUT(E-W).dwg

CONTRACT NO:



**ALL PROPOSED  
SANITARY HAS BEEN  
CHANGED FOR  
ADDENDUM 2**



MATCH LINE 25+50.00

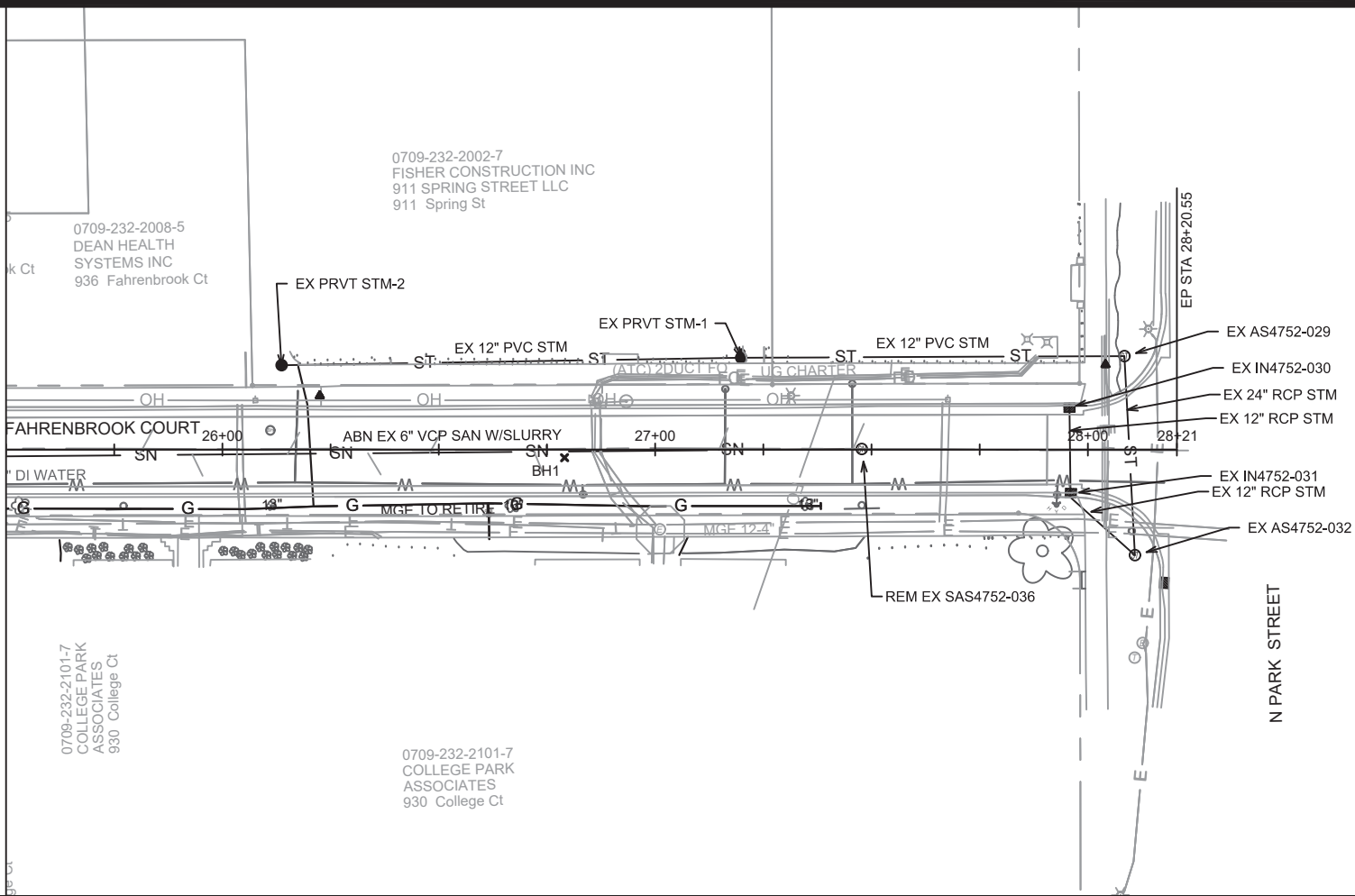
13180	ADDENDUM 2	DATE	BY	U-5
13180	REVISION	Date: 4/26/2021 3:54 PM		
13180	MARK	Scale: #####		
13180	DAO			

13180  
MADISON, WI  
CONTRACT NO: 8576

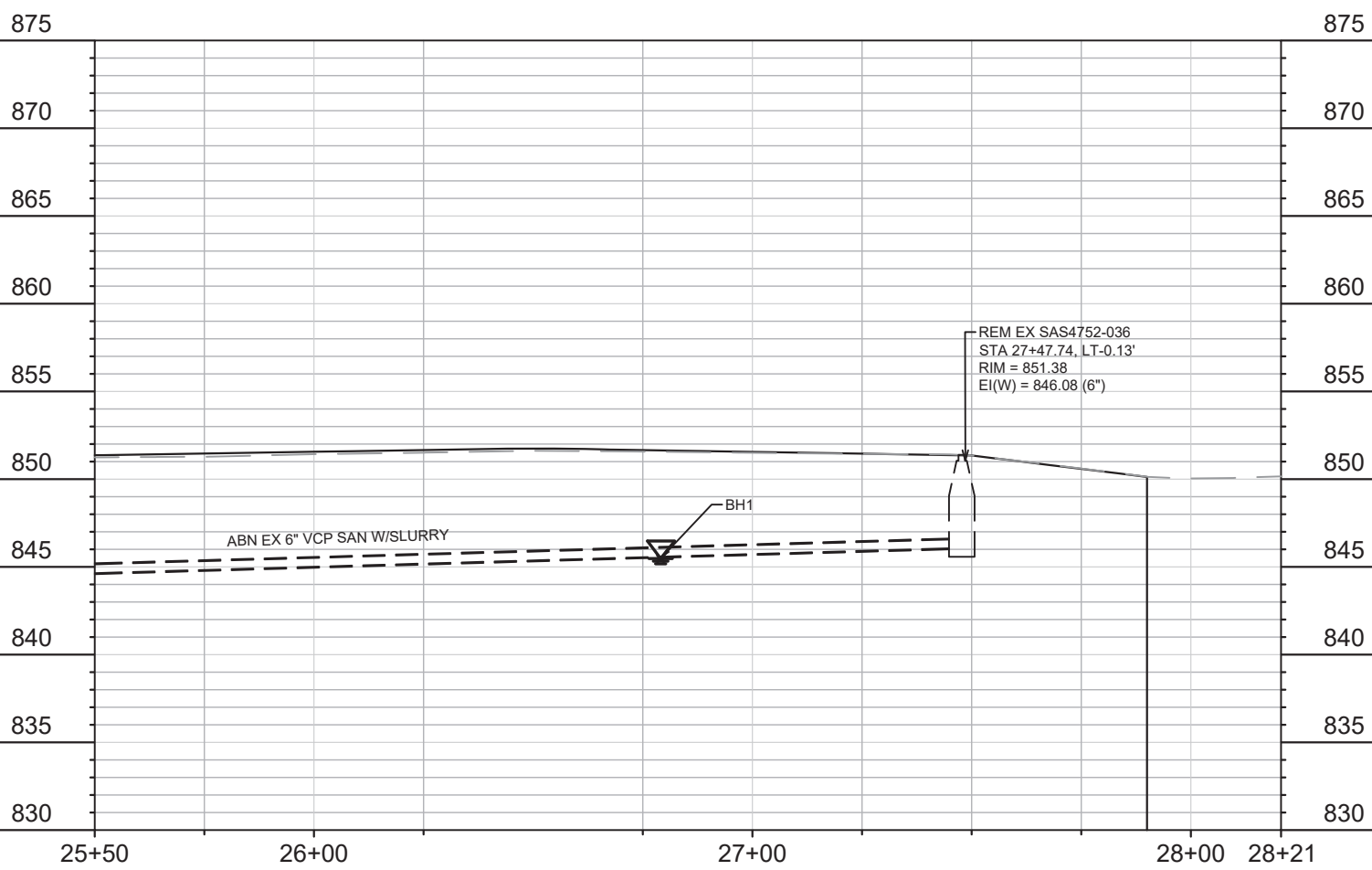
M:\DESIGN\Projects\13180\CAD\SEWERS\13180SEWERS\_LAYOUT(E-W).dwg

13180  
U-5

MATCH LINE 25+50.00



ALL PROPOSED  
SANITARY HAS BEEN  
CHANGED FOR  
ADDENDUM 2



MARK	DATE	BY
ADDENDUM 2	4/26/21	DAO
REVISION	DATE	BY
13180	4/26/2021	3:55 PM
Scale:	#####	
U-6		

13180  
SEWER UTILITY PLAN & PROFILE - FAHRENBROOK CT  
N BROOKS ST, FAHRENBROOK CT & COLLEGE CT RES ASMNT DIST-2021  
MADISON, WI  
CONTRACT NO: 8576  
M:\DESIGN\Projects\13180\CAD\SEWERS\13180SEWERS\_LAYOUT(E-W).dwg



13180  
U-6

# SANITARY SEWER SCHEDULE

\* ADDENDUM 2 - DAO 4/26/21  
 \*\* REVISION 1 - DAO 7/14/2021

N BROOKS ST, FAHRENBROOK CT & COLLEGE CT RES ASMNT DIST-2021 PROJECT NO. 12956	SHEET NO. U-7
SANITARY SEWER SCHEDULE	
CITY OF MADISON	

U-7

## PROPOSED SANITARY STRUCTURES

SAS NO.	STATION	LOCATION (OFFSET)	TOP OF CASTING	E.I.	DEPTH (FT)	NOTES
<b><u>N BROOKS ST</u></b>						
SAS#1	30+73.77	RT-0.18	850.49	842.37	8.12	(1)(2)
SAS#2	32+54.09	LT-0.18	851.54	842.60	8.94	(2)
** SAS#3	32+98.36	RT-0.10	851.22	<b>842.67</b>	<b>8.55</b>	(1)(2)
** SAS#3A	32+98.36	RT-12.95	<b>850.87</b>	<b>842.75</b>	8.12	(1)(2)
<b><u>COLLEGE CT</u></b>						
* SAS#4	16+19.11	RT-1.29	851.15	843.63	7.52	(1)
* SAS#5	12+15.66	RT-4.51	851.39	843.97	7.42	

## PROPOSED SANITARY PIPES

FROM (DNSTM)	TO (UPSTM)	DWNSTRM E.I.	UPSTRM E.I.	PLAN LGTH (FT)	SLOPE (%)	PIPE SIZE	PVC TYPE	NOTES
<b><u>N BROOKS ST</u></b>								
* MH02-007	SAS#1	842.35	842.37	16	0.10%	12"	SDR-35	
* SAS#1	SAS#2	842.42	842.60	180	0.10%	12"	SDR-35	
** SAS#2	SAS#3	842.65	<b>842.67</b>	44	<b>0.05%</b>	10"	SDR-35	
** SAS#3	SAS#3A	<b>842.72</b>	<b>842.75</b>	13	<b>0.20%</b>	10"	SDR-35	
<b><u>COLLEGE CT</u></b>								
* SAS#2	SAS#4	842.79	843.63	169	0.50%	8"	SDR-35	(3); STA 13+20 TO STA 13+45
* SAS#2	SAS#5	842.79	843.97	235	0.50%	8"	C900	(3); STA 14+65 TO STA 14+90

## SANITARY STRUCTURE REMOVALS & ABANDONMENTS

STRUCTURE ID NO.	STATION	LOCATION (OFFSET)	TOP OF CASTING	E.I.	DEPTH	NOTES
<b><u>N BROOKS ST</u></b>						
SAS4752-018	30+73.75	LT-0.18	850.49	842.73	7.76	
SAS4752-020	32+54.09	LT-0.18	851.34	842.23	9.11	
** SAS4752-021	32+98.36	LT-12.89	<b>850.86</b>	<b>843.26</b>	7.60	
SAS4752-022	32+98.36	LT-0.05	851.15	843.05	8.10	
* SAS4752-024	34+43.00	LT-0.10	<b>851.57</b>	<b>843.95</b>	7.62	ABANDON
<b><u>COLLEGE CT</u></b>						
SAS4752-019	11+69.85	RT-1.54	851.29	844.89	6.40	
SAS4752-037	17+47.20	RT-1.60	851.33	844.63	6.70	
<b><u>FAHRENBROOK CT</u></b>						
SAS4752-036	27+47.74	LT-0.13	851.38	846.08	5.30	

## SANITARY PIPE REMOVALS

REMOVE FROM	REMOVE TO	TOTAL LGTH (FT)	PIPE TYPE	PIPE SIZE	PAID (Y/N)	PD REM LEN (FT)	PD ABN W/SLURRY LEN (FT)
<b><u>N BROOKS ST</u></b>							
MH02-007	SAS4752-018	16	VCP	6"	N		
SAS4752-018	SAS4752-020	180	VCP	6"	N		
** SAS4752-022	SAS4752-021	13	PVC	8"	N		
* SAS4752-020	SAS4752-022	44	DI	6"	Y		44
* SAS4752-022	SAS4752-024	145	VCP	6"	Y		145
* SAS4752-023	SAS4752-024	7	VCP	8"	Y		7
* SAS4752-024	SAS4752-026	126	VCP	6"	Y		126
<b><u>COLLEGE CT</u></b>							
* SAS4752-020	SAS4752-019	281	VCP	6"	Y	43	
* SAS4752-020	SAS4752-037	297	VCP	6"	Y		144
<b><u>FAHRENBROOK CT</u></b>							
* SAS4752-023	SAS4752-036	284	VCP	6"	Y		284

## ULOS

ULO NO.	STATION	LOCATION (OFFSET)	TYPE	NOTES
<b><u>COLLEGE CT</u></b>				
** ULO1	14+85.33	LT-4.20	TELE	1" PL TOP=848.48
** ULO2	14+82.85	RT-1.78	FIBER	CONC DUCT TOP= 849.06
** ULO3	14+74.47	RT-1.40	FIBER	CONC DUCT TOP= 849.08; BOT=846.73
** ULO4	13+40.14	RT-0.74	ELEC	4" ELEC TOP=848.58
** ULO5	13+28.03	RT-0.64	ELEC	4" ELEC TOP=849.23
** ULO7	13+99.24	LT-3.60	WATER	10" DI TOP=844.70
** ULO8	13+99.24	LT-3.60	WATER	10" DI TOP=845.57
<b><u>N BROOKS ST</u></b>				
** ULO6	32+44.15	RT-0.02	ELEC	6" PL TOP=835.29

## SPECIFIC NOTES

- (1) INSTALL INTERNAL CHIMNEY SEAL
- (2) PROVIDE EXTERNAL SAS JOINT SEAL
- (3) INSTALL 8 INCH DIAMETER SEWER (PUSH METHOD, BORE & JACK, PIPE BURSTING, OR OPEN CUT TRENCH WITH TUNNELING)) (SEE BID ITEM 90003)

# STORM SEWER SCHEDULE

N BROOKS ST, FAHRENBROOK CT & COLLEGE CT RES ASMNT DIST-2021 PROJECT NO. 13180	SHEET NO. U-8
STORM SEWER SCHEDULE	
CITY OF MADISON	

U-8

\* ADDENDUM 2 - DAO 4/26/21  
\*\* REVISION 1 - DAO 7/14/21

## REBUILD STORM STRUCTURES

STRUC. NO.	ID NO.	STATION	LOCATION (OFFSET)	TYPE	DEPTH	NOTES	NOTES
<b>N BROOKS ST</b>							
** RB-0	UNK IN	30+78.04	RT-21.65	SADDLED IN	4.68	FP; (1)	
RB-1	IN4752-099	30+91.57	LT-17.54	H INLET	3.18	FP; (1)	
RB-2	AS4752-090	32+48.05	RT-18.97	5X7 CB	7.40	(2)	
RB-3	AS4752-089	33+39.08	RT-20.30	5X7 CB	8.50	(2)	
RB-4	IN4752-087	34+22.39	LT-17.43	H INLET	3.53	FP; (1)	
RB-5	IN4752-088	24+19.68	RT-18.98	H INLET	3.26	FP; (1)	
RB-6	AS4752-085	34+37.70	RT-18.03	5X7 CB	5.80	(2)	
RB-7	IN4752-086	34+65.45	LT-20.27	H INLET	2.18	FP; (1)	
RB-8	IN4752-084	34+75.41	RT-17.89	H INLET	2.55	FP; (1)	
<b>COLLEGE CT</b>							
RB-9	IN4752-093	15+00.03	RT-10.24	H INLET	2.10	FP; (1)	
RB-10	IN4752-094	15+00.99	LT-10.56	H INLET	4.48	FP; (1)	

## PROPOSED STORM STRUCTURES

STRUC. NO.	STATION	LOCATION (OFFSET)	TYPE	TOP OF CASTING	E.I.	DEPTH	NOTES
<b>N BROOKS ST</b>							
* S-1	32+84.01	RT-6.44	ROOF REPL W/CASTING	851.13	844.10	7.03	FP; (4)
** T-1	32+88.37	RT-20.86	TAP STORM BOX	-	844.07	-	
** S-2	33+05.92	RT-20.67	3X3 SAS	850.56	843.21	7.35	

## PROPOSED STORM PIPES TO BE LINED

FROM (DNSTM)	TO (UPSTM)	PIPE SIZE	PIPE LGTH (FT)	TYPE	LATERALS	NOTES
<b>N BROOKS ST</b>						
UNK IN AT REGENT	AS4752-090	24"	170	VCP	1	(3)
AS4752-090	AS4752-089	24"	91	VCP	0	
AS4752-089	AS4752-085	24"	99	VCP	0	
AS4752-085	IN4752-121	24"	169	VCP	0	

## PROPOSED STORM PIPES

PIPE NO.	FROM (DNSTM)	TO (UPSTM)	DISCH. E.I.	INLET E.I.	PLAN (PAY) LGTH (FT)	PIPE LGTH (FT)	SLOPE (%)	PIPE SIZE	TYPE	NOTES
<b>N BROOKS ST</b>										
** P-1	T-1	S-2	844.07	843.71	18	16	-2.05%	19X30	HERCP	

## STORM PIPE REMOVALS

PIPE REMOVAL NO.	REMOVE FROM	REMOVE TO	LENGTH (FT)	PAID REM (FT)	PAID ABN W/SLURRY (FT)	SIZE	TYPE	NOTES
<b>N BROOK ST</b>								
** RP-1	T-1	S-2	18	0	0	24"	VCP	

## SPECIFIC NOTES

- (1) REBUILD H-INLET W/ SALVAGED CASTINGS
- (2) RECONSTRUCT ROOF; REPLACE CASTING W/ TWO 1550-0054
- (3) REPAIR 6" STORM LATERAL AT MAIN; REPLACE W/ PVC IF NECESSARY
- \* (4) PROVIDE OPENING IN ACCORDANCE WITH STRUCTURAL DETAILS ON SHEET D-3; INSTALL NEENAH CASTING 1550-0054 AT STA 32+84.01, RT-6.44, RIM = 851.13

## STANDARD NOTES:

-PLAN LENGTH (PAY LENGTH) IS FROM CENTER OF STRUCTURE TO CENTER OF STRUCTURE. PIPE LENGTH IS ACTUAL LENGTH OF PIPE FROM STRUCTURE WALL TO STRUCTURE WALL. SLOPE CALCULATED USING PIPE LENGTH.

-ALL REBAR FOR FIELD POURED STRUCTURES SHALL BE EPOXY COATED UNLESS OTHERWISE NOTED IN SPECIAL BID ITEM SPECIFICATIONS OR DETAIL DRAWINGS. ANY EXPOSED STEEL SHALL BE TOUCHED UP OR RECOATED PRIOR TO USE.

-ALL PRECAST SAS STORM STRUCTURES SHALL BE CONSTRUCTED IN ACCORDANCE WITH STANDARD DETAIL DRAWING 5.7.5.

- ABBREVIATIONS: AE = APRON ENDWALL; RCP = REINFORCED CONCRETE PIPE; HERCP = HORIZONTAL ELLIPTICAL REINFORCED CONCRETE PIPE; DNA = DOES NOT APPLY; SAS = SEWER ACCESS STRUCTURE; LP = LOW POINT INLET STRUCTURE; FP = FIELD POURED STRUCTURE; TR = TOP OF CONCRETE ROOF; NCM = NO CROWN MATCH FOR PIPES; UD = UNDERDRAIN

- APPROXIMATE DISCHARGE E.I. GIVEN, ADJUST E.I. AND PIPE SLOPE IN THE FIELD.

- TOP OF CASTING GRADE GIVEN IS THE TOP OF CURB FOR INLET STRUCTURES AND THE FLOWLINE OF THE CLOSED CASTING FOR SAS's.

- ALL REINFORCED CONCRETE PIPES TO BE CLASS III UNLESS OTHERWISE NOTED.

- SURVEYOR TO CONFIRM THAT ALL INLET STATION / OFFSETS LINE UP WITH PROPOSED CURB AND GUTTER.

- ALL STRUCTURES CALLED OUT AS FIELD POURED SHALL BE FIELD POURED. ALL OTHER STRUCTURES (NOT INDICATED AS FIELD POURED) SHALL BE SUBMITTED TO CITY ENGINEERING FOR APPROVAL IF PRECAST STRUCTURES ARE PREFERRED. CONTACT DANIEL OLIVARES OF CITY ENGINEERING AT (608) 261-9285 FOR PRECAST APPROVALS, FAX SHOP DRAWINGS TO (608)264-9275, OR EMAIL SHOP DRAWINGS TO DAOLIVARES@CITYOFMADISON.COM.